



Cross-connector, No. of poles: 3, Mounting type: Can be screwed on, Width: 96 mm, Rated cross-section: 120 mm², Colour: natural

Business data

| | |
|--|-----------------|
| Article number | 17017.0 |
| Article name | QS 3/120/12 |
| GTIN (EAN) | 4044211131623 |
| Packaging unit | 10 |
| Quantity unit | PC |
| Weight per piece (not including packaging) | 72.4 g |
| Weight per piece (including packaging) | 72.6 g |
| Unit of weight | G |
| Customs number | 85389099 |
| Country of origin | DE |
| Product description | Cross-connector |
| Colour | Natural |

Data sheet

17017.0 QS 3/120/12



Technical data

Dimensions

| | |
|---------------------------------------|---------|
| Length | 25 mm |
| Width | 96 mm |
| Height | 4 mm |
| Hole diameter | 12.6 mm |
| Hole spacing (mid-point to mid-point) | 34 mm |
| Pitch size | 34 mm |

Connection data

| | |
|--------------|---|
| No. of poles | 3 |
|--------------|---|

Materials

| | |
|----------|------------|
| Material | Copper |
| Surface | Tin-plated |

Further technical data

| | |
|-----------------------------|-----------|
| Mounting type | Screwable |
| Number of bridged terminals | 3 |

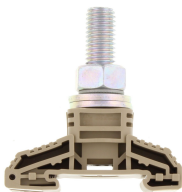
Environmental Product Compliance

| | |
|--------------------------------|------------|
| REACH Conform | yes |
| REACH Reference date | 2023-06-14 |
| REACH Candidate Substance Note | No |
| RoHS Conform | yes |

Media

Accessories

##INVERSE##CONTA-CONNECT



High-power stud terminal, Stud connection, Mounting type: Mounting rail TS 35/7.5,
Rated cross-section: 120 mm², Width: 32 mm, Colour: Beige

| Article number | Article name | GTIN (EAN) | Packaging unit |
|----------------|------------------|---------------|----------------|
| <u>17004.2</u> | HSK 120/M12 B BG | 4044211131494 | 10 ST |