

# Data sheet

## 17204.4 SQI 2,5/5 BK



Insulated cross-connector, No. of poles: 5, Mounting type: Plug in, Width: 25.2 mm, Rated cross-section: 2.5 mm², Colour: Black

RAL: 9005

### Business data

|  |                           |
|--|---------------------------|
| Article number                             | 17204.4                   |
| Article name                               | SQI 2,5/5 BK              |
| GTIN (EAN)                                 | 4044211150389             |
| Packaging unit                             | 20                        |
| Quantity unit                              | PC                        |
| Weight per piece (not including packaging) | 3 g                       |
| Weight per piece (including packaging)     | 3.4 g                     |
| Unit of weight                             | G                         |
| Customs number                             | 85389099                  |
| Country of origin                          | DE                        |
| Prio-Article                               | 17204.8                   |
| Product description                        | Insulated cross-connector |

### Technical data

#### Dimensions

|            |         |
|------------|---------|
| Length     | 4 mm    |
| Width      | 25.2 mm |
| Height     | 23 mm   |
| Pitch size | 5 mm    |

#### Ratings

|                                 |                     |
|---------------------------------|---------------------|
| Voltage with partition, max.    | 1000 V              |
| Voltage without partition, max. | 1000 V              |
| Rated current                   | 24 A                |
| Current load, max.              | 32 A                |
| Rated cross-section             | 2.5 mm <sup>2</sup> |
| Contamination degree            | 2                   |

#### Connection data

|              |   |
|--------------|---|
| No. of poles | 5 |
|--------------|---|

#### Materials

|                           |               |
|---------------------------|---------------|
| Material                  | Bronze        |
| Insulation housing        | Polyamide 6.6 |
| Flammability class UL 94  | V-2           |
| Working temperature, min. | -40 °C        |
| Working temperature, max. | 105 °C        |

#### Further technical data

|                               |         |
|-------------------------------|---------|
| Mounting type                 | Plug in |
| Insulation available          | ✓       |
| Touch protection is available | ✓       |
| Number of bridged terminals   | 5       |

#### Environmental Product Compliance

|                                |            |
|--------------------------------|------------|
| REACH Conform                  | yes        |
| REACH Reference date           | 2023-06-14 |
| REACH Candidate Substance Note | No         |
| RoHS Conform                   | yes        |

---

Media

---

### Accessories

#### Insulation cap for cross-connector



Insulating cap, Colour: Yellow

| Article number | Article name   | GTIN (EAN)    | Packaging unit |
|----------------|----------------|---------------|----------------|
| <u>17200.8</u> | SQIK 2,5-10 YE | 4044211148539 | 20             |

#### ##INVERSE##CONTA-CONNECT



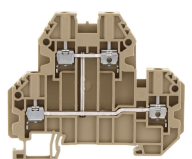
Protective-earth double-level terminal, Screw connection, Mounting type: Mounting rail TS 35/7.5, Rated cross-section: 2.5 mm², Width: 5.1 mm, Colour: Green-yellow

| Article number | Article name  | GTIN (EAN)    | Packaging unit |
|----------------|---------------|---------------|----------------|
| <u>17182.2</u> | SSLD 2,5 GNYE | 4044211190705 | 100 ST         |



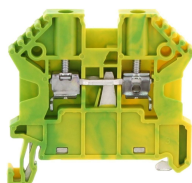
Double-level terminal, Screw connection, Mounting type: Mounting rail TS 35/7.5, Rated cross-section: 2.5 mm², Width: 5.1 mm, Colour: Beige

| Article number | Article name | GTIN (EAN)    | Packaging unit |
|----------------|--------------|---------------|----------------|
| <u>17180.2</u> | SRKD 2,5 BG  | 4044211190668 | 100            |



Double-level terminal, Screw connection, Mounting type: Mounting rail TS 35/7.5, Rated cross-section: 2.5 mm², Width: 5.1 mm, Colour: Beige

| Article number | Article name   | GTIN (EAN)    | Packaging unit |
|----------------|----------------|---------------|----------------|
| <u>17181.2</u> | SRKD 2,5/SV BG | 4044211190682 | 100            |



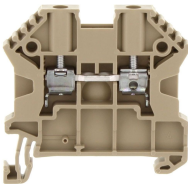
Protective earth terminal, Screw connection, Mounting type: Mounting rail TS 35/7.5, Rated cross-section: 2.5 mm², Width: 5 mm, Colour: Green-yellow

| Article number | Article name    | GTIN (EAN)    | Packaging unit |
|----------------|-----------------|---------------|----------------|
| <u>17103.2</u> | SSL 2,5/2A GNYE | 4044211141684 | 100 ST         |

# Data sheet

## 17204.4 SQI 2,5/5 BK

##INVERSE##CONTA-CONNECT



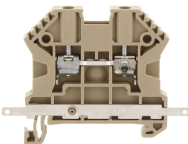
Feed-through terminal, Screw connection, Mounting type: Mounting rail TS 35/7.5, Rated cross-section: 2.5 mm², Width: 5 mm, Colour: Beige

| Article number | Article name  | GTIN (EAN)    | Packaging unit |
|----------------|---------------|---------------|----------------|
| <u>17100.2</u> | SRK 2,5/2A BG | 4044211141653 | 100            |



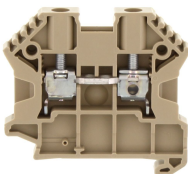
Feed-through terminal, Screw connection, Mounting type: Mounting rail TS 35/7.5, Rated cross-section: 2.5 mm², Width: 5 mm, Colour: Black-yellow

| Article number | Article name       | GTIN (EAN)    | Packaging unit |
|----------------|--------------------|---------------|----------------|
| <u>17129.2</u> | SRK 2,5/2A/PE BKYE | 4044211200688 | 100 ST         |



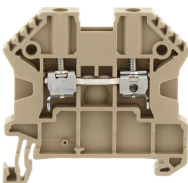
Feed-through terminal, Screw connection, Mounting type: Mounting rail TS 35/7.5, Rated cross-section: 2.5 mm², Width: 5 mm, Colour: Beige

| Article number | Article name      | GTIN (EAN)    | Packaging unit |
|----------------|-------------------|---------------|----------------|
| <u>17119.2</u> | SRK 2,5/2A SAS BG | 4044211149048 | 80             |



Feed-through terminal, Screw connection, Mounting type: Mounting rail TS 35/7.5, Rated cross-section: 2.5 mm², Width: 5 mm, Colour: Beige

| Article number | Article name    | GTIN (EAN)    | Packaging unit |
|----------------|-----------------|---------------|----------------|
| <u>17101.2</u> | SRK B 2,5/2A BG | 4044211141660 | 100 ST         |



Feed-through terminal, Screw connection, Mounting type: Mounting rail TS 35/7.5, Rated cross-section: 2.5 mm², Width: 5 mm, Colour: Beige

| Article number | Article name    | GTIN (EAN)    | Packaging unit |
|----------------|-----------------|---------------|----------------|
| <u>17102.2</u> | SRK 2,5/2A/Z BG | 4044211141677 | 100 ST         |