

Data sheet

17207.9 SQI 2,5/8 RD



Insulated cross-connector, No. of poles: 8, Mounting type: Plug in, Width: 40.5 mm, Rated cross-section: 2.5 mm², Colour: Red

Business data

Article number	17207.9
Article name	SQI 2,5/8 RD
GTIN (EAN)	4044211174927
Packaging unit	10
Quantity unit	PC
Weight per piece (not including packaging)	4.5 g
Weight per piece (including packaging)	4.6 g
Unit of weight	G
Customs number	85389099
Country of origin	DE
Prio-Article	17207.8
Product description	Insulated cross-connector

Technical data

Dimensions

Length	4 mm
Width	40.5 mm
Height	23 mm
Pitch size	5 mm

Ratings

Voltage with partition, max.	1000 V
Voltage without partition, max.	1000 V
Rated current	24 A
Current load, max.	32 A
Rated cross-section	2.5 mm ²
Contamination degree	2

Connection data

No. of poles	8
--------------	---

Materials

Material	Bronze
Insulation housing	Polyamide 6.6
Flammability class UL 94	V-2
Working temperature, min.	-40 °C
Working temperature, max.	105 °C

Further technical data

Mounting type	Plug in
Insulation available	✓
Touch protection is available	✓
Number of bridged terminals	8

Environmental Product Compliance

REACH Conform	yes
REACH Reference date	2023-06-14
REACH Candidate Substance Note	No
RoHS Conform	yes

Media

Accessories

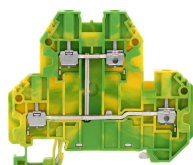
Insulation cap for cross-connector



Insulating cap, Colour: Yellow

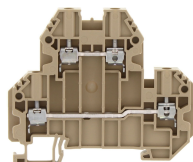
Article number	Article name	GTIN (EAN)	Packaging unit
<u>17200.8</u>	SQIK 2,5-10 YE	4044211148539	20

##INVERSE##CONTA-CONNECT



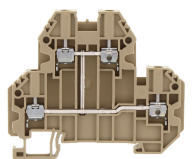
Protective-earth double-level terminal, Screw connection, Mounting type: Mounting rail TS 35/7.5, Rated cross-section: 2.5 mm², Width: 5.1 mm, Colour: Green-yellow

Article number	Article name	GTIN (EAN)	Packaging unit
<u>17182.2</u>	SSLD 2,5 GNYE	4044211190705	100 ST



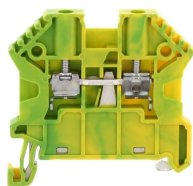
Double-level terminal, Screw connection, Mounting type: Mounting rail TS 35/7.5, Rated cross-section: 2.5 mm², Width: 5.1 mm, Colour: Beige

Article number	Article name	GTIN (EAN)	Packaging unit
<u>17180.2</u>	SRKD 2,5 BG	4044211190668	100



Double-level terminal, Screw connection, Mounting type: Mounting rail TS 35/7.5, Rated cross-section: 2.5 mm², Width: 5.1 mm, Colour: Beige

Article number	Article name	GTIN (EAN)	Packaging unit
<u>17181.2</u>	SRKD 2,5/SV BG	4044211190682	100



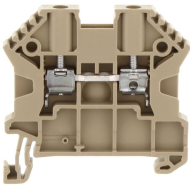
Protective earth terminal, Screw connection, Mounting type: Mounting rail TS 35/7.5, Rated cross-section: 2.5 mm², Width: 5 mm, Colour: Green-yellow

Article number	Article name	GTIN (EAN)	Packaging unit
<u>17103.2</u>	SSL 2,5/2A GNYE	4044211141684	100 ST

Data sheet

17207.9 SQI 2,5/8 RD

##INVERSE##CONTA-CONNECT



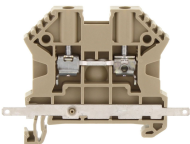
Feed-through terminal, Screw connection, Mounting type: Mounting rail TS 35/7.5, Rated cross-section: 2.5 mm², Width: 5 mm, Colour: Beige

Article number	Article name	GTIN (EAN)	Packaging unit
<u>17100.2</u>	SRK 2,5/2A BG	4044211141653	100



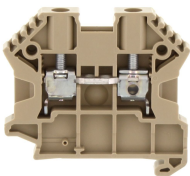
Feed-through terminal, Screw connection, Mounting type: Mounting rail TS 35/7.5, Rated cross-section: 2.5 mm², Width: 5 mm, Colour: Black-yellow

Article number	Article name	GTIN (EAN)	Packaging unit
<u>17129.2</u>	SRK 2,5/2A/PE BKYE	4044211200688	100 ST



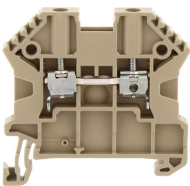
Feed-through terminal, Screw connection, Mounting type: Mounting rail TS 35/7.5, Rated cross-section: 2.5 mm², Width: 5 mm, Colour: Beige

Article number	Article name	GTIN (EAN)	Packaging unit
<u>17119.2</u>	SRK 2,5/2A SAS BG	4044211149048	80



Feed-through terminal, Screw connection, Mounting type: Mounting rail TS 35/7.5, Rated cross-section: 2.5 mm², Width: 5 mm, Colour: Beige

Article number	Article name	GTIN (EAN)	Packaging unit
<u>17101.2</u>	SRK B 2,5/2A BG	4044211141660	100 ST



Feed-through terminal, Screw connection, Mounting type: Mounting rail TS 35/7.5, Rated cross-section: 2.5 mm², Width: 5 mm, Colour: Beige

Article number	Article name	GTIN (EAN)	Packaging unit
<u>17102.2</u>	SRK 2,5/2A/Z BG	4044211141677	100 ST