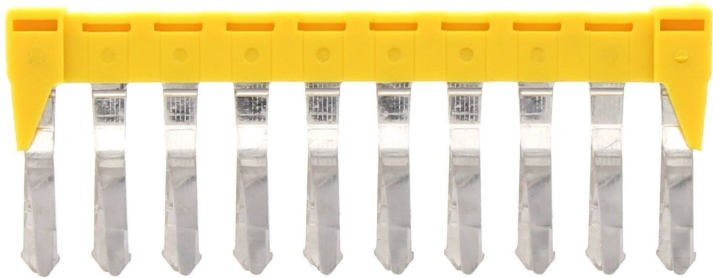


# Data sheet

## 17219.9 SQI 4/10 RD



Insulated cross-connector, No. of poles: 10, Mounting type: Plug in, Width: 60.1 mm, Rated cross-section: 4 mm², Colour: Red

### Business data

|  |                           |
|--|---------------------------|
| Article number                             | <u>17219.9</u>            |
| Article name                               | SQI 4/10 RD               |
| GTIN (EAN)                                 | 4044211175542             |
| Packaging unit                             | 10                        |
| Quantity unit                              | PC                        |
| Weight per piece (not including packaging) | 7 g                       |
| Weight per piece (including packaging)     | 7.1 g                     |
| Unit of weight                             | G                         |
| Customs number                             | 85389099                  |
| Country of origin                          | DE                        |
| Prio-Article                               | 17219.8                   |
| Product description                        | Insulated cross-connector |

# Data sheet

## 17219.9 SQI 4/10 RD

### Technical data

#### Dimensions

|            |         |
|------------|---------|
| Length     | 4 mm    |
| Width      | 60.1 mm |
| Height     | 23 mm   |
| Pitch size | 6 mm    |

#### Ratings

|                                 |                   |
|---------------------------------|-------------------|
| Voltage with partition, max.    | 1000 V            |
| Voltage without partition, max. | 1000 V            |
| Rated current                   | 32 A              |
| Current load, max.              | 41 A              |
| Rated cross-section             | 4 mm <sup>2</sup> |
| Contamination degree            | 2                 |

#### Connection data

|              |    |
|--------------|----|
| No. of poles | 10 |
|--------------|----|

#### Materials

|                           |               |
|---------------------------|---------------|
| Material                  | Bronze        |
| Insulation housing        | Polyamide 6.6 |
| Flammability class UL 94  | V-2           |
| Working temperature, min. | -40 °C        |
| Working temperature, max. | 105 °C        |

#### Further technical data

|                               |         |
|-------------------------------|---------|
| Mounting type                 | Plug in |
| Insulation available          | ✓       |
| Touch protection is available | ✓       |
| Number of bridged terminals   | 10      |

#### Environmental Product Compliance

|                                |            |
|--------------------------------|------------|
| REACH Conform                  | yes        |
| REACH Reference date           | 2023-06-14 |
| REACH Candidate Substance Note | No         |
| RoHS Conform                   | yes        |

---

**Media**

---

Accessories

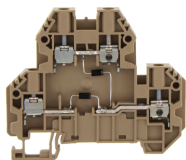
Insulation cap for cross-connector



Insulating cap, Colour: Yellow

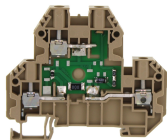
| Article number | Article name   | GTIN (EAN)    | Packaging unit |
|----------------|----------------|---------------|----------------|
| <u>17200.8</u> | SQIK 2,5-10 YE | 4044211148539 | 20             |

##INVERSE##CONTA-CONNECT



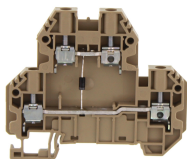
Double-level terminal with electronic components, Screw connection, Mounting type: Mounting rail TS 35/7.5, Rated cross-section: 4 mm², Width: 6.1 mm, Colour: Beige

| Article number | Article name | GTIN (EAN)    | Packaging unit |
|----------------|--------------|---------------|----------------|
| <u>17566.2</u> | SRKD 4/D5 BG | 4044211234669 | 100 ST         |



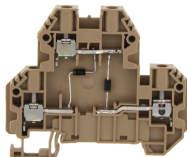
Double-level terminal with electronic components, Screw connection, Mounting type: Mounting rail TS 35/7.5, Rated cross-section: 4 mm², Width: 6.1 mm, Colour: Beige

| Article number | Article name  | GTIN (EAN)    | Packaging unit |
|----------------|---------------|---------------|----------------|
| <u>17569.2</u> | SRKD 4/RD5 BG | 4044211234690 | 100 ST         |



Double-level terminal with electronic components, Screw connection, Mounting type: Mounting rail TS 35/7.5, Rated cross-section: 4 mm², Width: 6.1 mm, Colour: Beige

| Article number | Article name | GTIN (EAN)    | Packaging unit |
|----------------|--------------|---------------|----------------|
| <u>17563.2</u> | SRKD 4/D2 BG | 4044211234638 | 100 ST         |



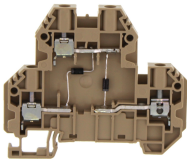
Double-level terminal with electronic components, Screw connection, Mounting type: Mounting rail TS 35/7.5, Rated cross-section: 4 mm², Width: 6.1 mm, Colour: Beige

| Article number | Article name | GTIN (EAN)    | Packaging unit |
|----------------|--------------|---------------|----------------|
| <u>17564.2</u> | SRKD 4/D3 BG | 4044211234645 | 100 ST         |

# Data sheet

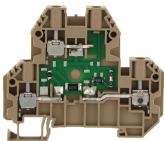
## 17219.9 SQI 4/10 RD

##INVERSE##CONTA-CONNECT



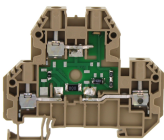
Double-level terminal with electronic components, Screw connection, Mounting type:Mounting rail TS 35/7.5, Rated cross-section: 4 mm<sup>2</sup>, Width: 6.1 mm, Colour: Beige

| Article number          | Article name | GTIN (EAN)    | Packaging unit |
|-------------------------|--------------|---------------|----------------|
| <a href="#">17565.2</a> | SRKD 4/D4 BG | 4044211234652 | 100 ST         |



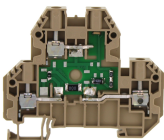
Double-level terminal with electronic components, Screw connection, Mounting type:Mounting rail TS 35/7.5, Rated cross-section: 4 mm<sup>2</sup>, Width: 6.1 mm, Colour: Beige

| Article number          | Article name              | GTIN (EAN)    | Packaging unit |
|-------------------------|---------------------------|---------------|----------------|
| <a href="#">17570.2</a> | SRKD 4/LED1(RD)/24V DC BG | 4044211234706 | 100 ST         |



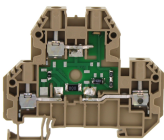
Double-level terminal with electronic components, Screw connection, Mounting type:Mounting rail TS 35/7.5, Rated cross-section: 4 mm<sup>2</sup>, Width: 6.1 mm, Colour: Beige

| Article number          | Article name              | GTIN (EAN)    | Packaging unit |
|-------------------------|---------------------------|---------------|----------------|
| <a href="#">17571.2</a> | SRKD 4/LED1(GN)/24V DC BG | 4044211234713 | 100 ST         |



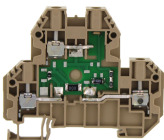
Double-level terminal with electronic components, Screw connection, Mounting type:Mounting rail TS 35/7.5, Rated cross-section: 4 mm<sup>2</sup>, Width: 6.1 mm, Colour: Beige

| Article number          | Article name              | GTIN (EAN)    | Packaging unit |
|-------------------------|---------------------------|---------------|----------------|
| <a href="#">17572.2</a> | SRKD 4/LED2(RD)/24V DC BG | 4044211234720 | 100 ST         |



Double-level terminal with electronic components, Screw connection, Mounting type:Mounting rail TS 35/7.5, Rated cross-section: 4 mm<sup>2</sup>, Width: 6.1 mm, Colour: Beige

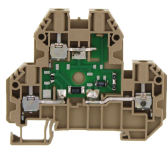
| Article number          | Article name              | GTIN (EAN)    | Packaging unit |
|-------------------------|---------------------------|---------------|----------------|
| <a href="#">17575.2</a> | SRKD 4/LED3(GN)/24V DC BG | 4044211234751 | 100 ST         |



Double-level terminal with electronic components, Screw connection, Mounting type:Mounting rail TS 35/7.5, Rated cross-section: 4 mm<sup>2</sup>, Width: 6.1 mm, Colour: Beige

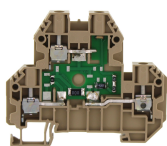
| Article number          | Article name              | GTIN (EAN)    | Packaging unit |
|-------------------------|---------------------------|---------------|----------------|
| <a href="#">17576.2</a> | SRKD 4/LED4(RD)/24V DC BG | 4044211234768 | 100 ST         |

### ##INVERSE##CONTA-CONNECT



Double-level terminal with electronic components, Screw connection, Mounting type:Mounting rail TS 35/7.5, Rated cross-section: 4 mm<sup>2</sup>, Width: 6.1 mm, Colour: Beige

| Article number | Article name              | GTIN (EAN)    | Packaging unit |
|----------------|---------------------------|---------------|----------------|
| <u>17578.2</u> | SRKD 4/LED5(RD)/24V AC BG | 4044211234782 | 100 ST         |



Double-level terminal with electronic components, Screw connection, Mounting type:Mounting rail TS 35/7.5, Rated cross-section: 4 mm<sup>2</sup>, Width: 6.1 mm, Colour: Beige

| Article number | Article name               | GTIN (EAN)    | Packaging unit |
|----------------|----------------------------|---------------|----------------|
| <u>17579.2</u> | SRKD 4/LED5(RD)/230V AC BG | 4044211234799 | 100 ST         |



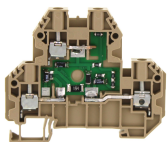
Double-level terminal with electronic components, Screw connection, Mounting type:Mounting rail TS 35/7.5, Rated cross-section: 4 mm<sup>2</sup>, Width: 6.1 mm, Colour: Beige

| Article number | Article name | GTIN (EAN)    | Packaging unit |
|----------------|--------------|---------------|----------------|
| <u>17561.2</u> | SRKD 4/D0 BG | 4044211234614 | 100 ST         |



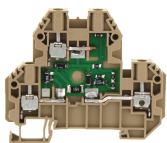
Double-level terminal with electronic components, Screw connection, Mounting type:Mounting rail TS 35/7.5, Rated cross-section: 4 mm<sup>2</sup>, Width: 6.1 mm, Colour: Beige

| Article number | Article name | GTIN (EAN)    | Packaging unit |
|----------------|--------------|---------------|----------------|
| <u>17562.2</u> | SRKD 4/D1 BG | 4044211234621 | 100 ST         |



Double-level terminal with electronic components, Screw connection, Mounting type:Mounting rail TS 35/7.5, Rated cross-section: 4 mm<sup>2</sup>, Width: 6.1 mm, Colour: Beige

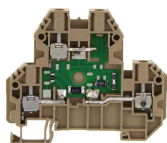
| Article number | Article name | GTIN (EAN)    | Packaging unit |
|----------------|--------------|---------------|----------------|
| <u>17567.2</u> | SRKD 4/D6 BG | 4044211234676 | 100 ST         |



Double-level terminal with electronic components, Screw connection, Mounting type:Mounting rail TS 35/7.5, Rated cross-section: 4 mm<sup>2</sup>, Width: 6.1 mm, Colour: Beige

| Article number | Article name  | GTIN (EAN)    | Packaging unit |
|----------------|---------------|---------------|----------------|
| <u>17568.2</u> | SRKD 4/RD1 BG | 4044211234683 | 100 ST         |

### ##INVERSE##CONTA-CONNECT



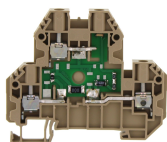
Double-level terminal with electronic components, Screw connection, Mounting type: Mounting rail TS 35/7.5, Rated cross-section: 4 mm<sup>2</sup>, Width: 6.1 mm, Colour: Beige

| Article number | Article name              | GTIN (EAN)    | Packaging unit |
|----------------|---------------------------|---------------|----------------|
| <u>17573.2</u> | SRKD 4/LED2(GN)/24V DC BG | 4044211234737 | 100 ST         |



Double-level terminal with electronic components, Screw connection, Mounting type: Mounting rail TS 35/7.5, Rated cross-section: 4 mm<sup>2</sup>, Width: 6.1 mm, Colour: Beige

| Article number | Article name              | GTIN (EAN)    | Packaging unit |
|----------------|---------------------------|---------------|----------------|
| <u>17574.2</u> | SRKD 4/LED3(RD)/24V DC BG | 4044211234744 | 100 ST         |



Double-level terminal with electronic components, Screw connection, Mounting type: Mounting rail TS 35/7.5, Rated cross-section: 4 mm<sup>2</sup>, Width: 6.1 mm, Colour: Beige

| Article number | Article name              | GTIN (EAN)    | Packaging unit |
|----------------|---------------------------|---------------|----------------|
| <u>17577.2</u> | SRKD 4/LED4(GN)/24V DC BG | 4044211234775 | 100 ST         |



Fuse-disconnect terminal, Screw connection, Mounting type: Mounting rail TS 35/7.5, Rated cross-section: 4 mm<sup>2</sup>, Width: 6.1 mm, Colour: Black

| Article number | Article name                  | GTIN (EAN)    | Packaging unit |
|----------------|-------------------------------|---------------|----------------|
| <u>17172.4</u> | SSIK 4/2A/LED 30-60V AC/DC BK | 4044211180447 | 25 ST          |



Fuse-disconnect terminal, Screw connection, Mounting type: Mounting rail TS 35/7.5, Rated cross-section: 4 mm<sup>2</sup>, Width: 6.1 mm, Colour: Black

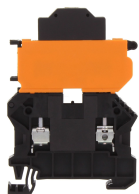
| Article number | Article name | GTIN (EAN)    | Packaging unit |
|----------------|--------------|---------------|----------------|
| <u>17150.4</u> | SSIK 4/2A BK | 4044211179816 | 50 ST          |



Fuse-disconnect terminal, Screw connection, Mounting type: Mounting rail TS 35/7.5, Rated cross-section: 4 mm<sup>2</sup>, Width: 6.1 mm, Colour: Black

| Article number | Article name                  | GTIN (EAN)    | Packaging unit |
|----------------|-------------------------------|---------------|----------------|
| <u>17171.4</u> | SSIK 4/2A/LED 12-30V AC/DC BK | 4044211180430 | 25 ST          |

### ##INVERSE##CONTA-CONNECT



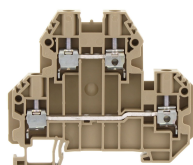
Fuse-disconnect terminal, Screw connection, Mounting type: Mounting rail TS 35/7.5, Rated cross-section: 4 mm², Width: 6.1 mm, Colour: Black

| Article number | Article name                    | GTIN (EAN)    | Packaging unit |
|----------------|---------------------------------|---------------|----------------|
| <u>17173.4</u> | SSIK 4/2A/LED 110-250V AC/DC BK | 4044211180454 | 25 ST          |



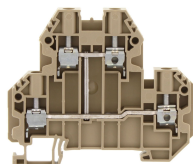
Fuse-disconnect terminal, Screw connection, Mounting type: Mounting rail TS 35/7.5, Rated cross-section: 4 mm², Width: 6.1 mm, Colour: Black

| Article number | Article name                | GTIN (EAN)    | Packaging unit |
|----------------|-----------------------------|---------------|----------------|
| <u>17174.4</u> | SSIK 4/2A/LED 500V AC/DC BK | 4044211180461 | 25 ST          |



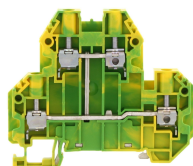
Double-level terminal, Screw connection, Mounting type: Mounting rail TS 35/7.5, Rated cross-section: 4 mm², Width: 6.1 mm, Colour: Beige

| Article number | Article name | GTIN (EAN)    | Packaging unit |
|----------------|--------------|---------------|----------------|
| <u>17185.2</u> | SRKD 4 BG    | 4044211190712 | 100            |



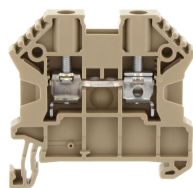
Double-level terminal, Screw connection, Mounting type: Mounting rail TS 35/7.5, Rated cross-section: 4 mm², Width: 6.1 mm, Colour: Beige

| Article number | Article name | GTIN (EAN)    | Packaging unit |
|----------------|--------------|---------------|----------------|
| <u>17186.2</u> | SRKD 4/SV BG | 4044211190736 | 100            |



Protective-earth double-level terminal, Screw connection, Mounting type: Mounting rail TS 35/7.5, Rated cross-section: 4 mm², Width: 6.1 mm, Colour: Green-yellow

| Article number | Article name | GTIN (EAN)    | Packaging unit |
|----------------|--------------|---------------|----------------|
| <u>17187.2</u> | SSLD 4 GNYE  | 4044211190750 | 100 ST         |



Feed-through terminal, Screw connection, Mounting type: Mounting rail TS 35/7.5, Rated cross-section: 4 mm², Width: 6 mm, Colour: Beige

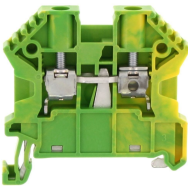
| Article number | Article name  | GTIN (EAN)    | Packaging unit |
|----------------|---------------|---------------|----------------|
| <u>17106.2</u> | SRK 4/2A/Z BG | 4044211141714 | 100 ST         |



# Data sheet

## 17219.9 SQI 4/10 RD

##INVERSE##CONTA-CONNECT



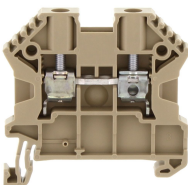
Protective earth terminal, Screw connection, Mounting type: Mounting rail TS 35/7.5, Rated cross-section: 4 mm<sup>2</sup>, Width: 6 mm, Colour: Green-yellow

| Article number | Article name  | GTIN (EAN)    | Packaging unit |
|----------------|---------------|---------------|----------------|
| <u>17107.2</u> | SSL 4/2A GNYE | 4044211141721 | 100 ST         |



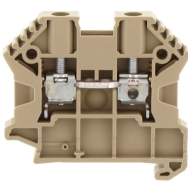
Feed-through terminal, Screw connection, Mounting type: Mounting rail TS 35/7.5, Rated cross-section: 4 mm<sup>2</sup>, Width: 6 mm, Colour: Black-yellow

| Article number | Article name     | GTIN (EAN)    | Packaging unit |
|----------------|------------------|---------------|----------------|
| <u>17155.2</u> | SRK 4/2A/PE BKYE | 4044211186692 | 100 ST         |



Feed-through terminal, Screw connection, Mounting type: Mounting rail TS 35/7.5, Rated cross-section: 4 mm<sup>2</sup>, Width: 6 mm, Colour: Beige

| Article number | Article name | GTIN (EAN)    | Packaging unit |
|----------------|--------------|---------------|----------------|
| <u>17104.2</u> | SRK 4/2A BG  | 4044211141691 | 100            |



Feed-through terminal, Screw connection, Mounting type: Mounting rail TS 35/7.5, Rated cross-section: 4 mm<sup>2</sup>, Width: 6 mm, Colour: Beige

| Article number | Article name  | GTIN (EAN)    | Packaging unit |
|----------------|---------------|---------------|----------------|
| <u>17105.2</u> | SRK B 4/2A BG | 4044211141707 | 100 ST         |