

Data sheet

17282.7 SAD 1/16/B WH



Cover, Length: 40.25 mm, Width: 16 mm, Colour: White

RAL: 9010

Business data

Article number	<u>17282.7</u>
Article name	SAD 1/16/B WH
GTIN (EAN)	4044211199654
Packaging unit	20
Quantity unit	PC
Weight per piece (not including packaging)	1.13 g
Weight per piece (including packaging)	1.3 g
Unit of weight	G
Customs number	85389099
Country of origin	DE
Product description	Cover
Colour	White

Technical data

Dimensions

Length	40.25 mm
Width	16 mm
Height	6 mm

Materials

Material	Polyamide 6.6
Flammability class UL 94	V-2
Working temperature, min.	-40 °C
Working temperature, max.	105 °C

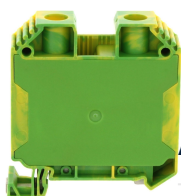
Environmental Product Compliance

REACH Conform	yes
REACH Reference date	2023-06-14
REACH Candidate Substance Note	No
RoHS Conform	yes

Media

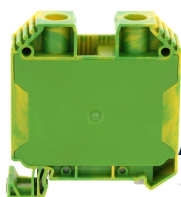
Accessories

##INVERSE##CONTA-CONNECT



Protective earth terminal, Screw connection, Mounting type: Mounting rail TS 35/7.5, Rated cross-section: 35 mm², Width: 16.1 mm, Colour: Green-yellow

Article number	Article name	GTIN (EAN)	Packaging unit
17147.2	SSL 35/2A/IS GNYE	4044211186678	20 ST



Protective earth terminal, Screw connection, Mounting type: Mounting rail TS 35/7.5, Rated cross-section: 35 mm², Width: 16.1 mm, Colour: Green-yellow

Article number	Article name	GTIN (EAN)	Packaging unit
17145.2	SSL 35/2A GNYE	4044211186661	20 ST



Feed-through terminal, Screw connection, Mounting type: Mounting rail TS 35/7.5, Rated cross-section: 35 mm², Width: 16.1 mm, Colour: Beige

Article number	Article name	GTIN (EAN)	Packaging unit
17141.2	SRK 35/2A/Z BG	4044211186630	20 ST



Feed-through terminal, Screw connection, Mounting type: Mounting rail TS 35/7.5, Rated cross-section: 35 mm², Width: 16.1 mm, Colour: Beige

Article number	Article name	GTIN (EAN)	Packaging unit
17143.2	SRK 35/2A/Z/IS BG	4044211186654	20 ST



Feed-through terminal, Screw connection, Mounting type: Mounting rail TS 35/7.5, Rated cross-section: 35 mm², Width: 16.1 mm, Colour: Beige

Article number	Article name	GTIN (EAN)	Packaging unit
17140.2	SRK 35/2A BG	4044211186616	20



Feed-through terminal, Screw connection, Mounting type: Mounting rail TS 35/7.5, Rated cross-section: 35 mm², Width: 16.1 mm, Colour: Beige

Article number	Article name	GTIN (EAN)	Packaging unit
17142.2	SRK 35/2A/IS BG	4044211186647	20