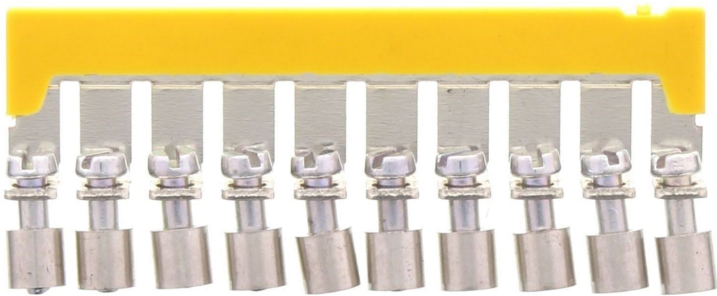


# Data sheet

## 2743.2 QI 10 YE



Insulated cross-connector, No. of poles: 10, Mounting type: Can be screwed on, Width: 59.7 mm, Colour: Yellow

**RAL:** 1026

### Business data

Article number	2743.2
Article name	QI 10 YE
GTIN (EAN)	4044211054830
Packaging unit	10
Quantity unit	PC
Weight per piece (not including packaging)	17.8 g
Weight per piece (including packaging)	18 g
Unit of weight	G
Customs number	85389099
Country of origin	CZ
Product description	Insulated cross-connector
Colour	Yellow

### Technical data

#### Dimensions

Length	2.3 mm
Width	59.7 mm
Pitch size	6 mm

#### Ratings

Voltage with partition, max.	800 V
Voltage without partition, max.	400 V
Rated current	32 A
Contamination degree	3

#### Connection data

No. of poles	10
Screw head	Slotted
Screw threading	M 3
Tightening torque, min.	0.5 Nm
Tightening torque, max.	1 Nm

#### Materials

Material	Copper
Surface	Tin-plated
Insulation housing	Polyamide 6.6
Flammability class UL 94	V-2
Working temperature, min.	-40 °C
Working temperature, max.	105 °C

#### Further technical data

Mounting type	Screwable
Insulation available	✓
Number of bridged terminals	10

Technical data

Environmental Product Compliance

REACH Conform	No
REACH Reference date	2023-06-14
REACH Candidate Substance Note	No
REACH CAS 1 Substance	LEAD
REACH CAS 1 Percent minimal	0.1 %
REACH CAS 1 Percent maximum	4 %
REACH CAS 1 Number	7439-92-1
RoHS Conform	yes
RoHS Exception rule	6c

**Media**



### Accessories

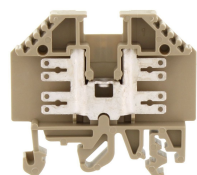
#### Screwdriver

Screwdriver with bare blade, Colour: Black-grey



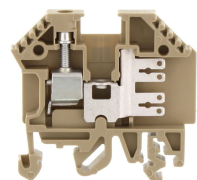
Article number	Article name	GTIN (EAN)	Packaging unit
<u>1086.0</u>	SDB 0,6x3,5	4044211014797	1 ST

#### ##INVERSE##CONTA-CONNECT



Feed-through terminal, Faston Spade connection, Mounting type: Mounting rail TS 35/7.5 and TS 32, Width: 6 mm, Colour: Beige

Article number	Article name	GTIN (EAN)	Packaging unit
<u>1014.2</u>	FF 2,5 BG	4044211003203	100



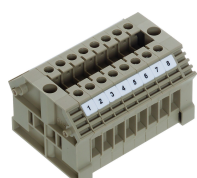
Feed-through terminal, Faston Spade connection / screw connection, Mounting type: Mounting rail TS 35/7.5 and TS 32, Rated cross-section: 2.5 mm², Width: 6 mm, Colour: Beige

Article number	Article name	GTIN (EAN)	Packaging unit
<u>1019.2</u>	SF 2,5-4 BG	4044211004323	100 ST



Feed-through terminal/block variant, Screw connection, Mounting type: Mounting rail TS 35/7.5 and TS 32, Rated cross-section: 4 mm², Colour: Beige

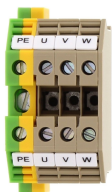
Article number	Article name	GTIN (EAN)	Packaging unit
<u>1003.2</u>	KBL 2,5-4 beids. Bez-g (1-9) BG	4044211000721	10 ST



Feed-through terminal for direct mount/block variant, Screw connection, Mounting type: Mounting surface, Rated cross-section: 4 mm², Colour: Beige

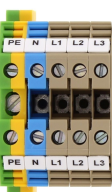
Article number	Article name	GTIN (EAN)	Packaging unit
<u>1385.2</u>	KBL 2,5-4/10-D BG	4044211044268	10

### ##INVERSE##CONTA-CONNECT



Four-wire motor-connection block, Screw connection, Mounting type: Mounting rail TS 35/7.5 and TS 32, Rated cross-section: 4 mm<sup>2</sup>, Colour: Multi-coloured

Article number	Article name	GTIN (EAN)	Packaging unit
<u>1521.2</u>	VMAB 2,5-4	4044211046682	10 ST



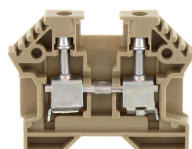
Five-wire mains-connection block, Screw connection, Mounting type: Mounting rail TS 35/7.5 and TS 32, Rated cross-section: 4 mm<sup>2</sup>, Colour: Multi-coloured

Article number	Article name	GTIN (EAN)	Packaging unit
<u>1524.2</u>	FNAB 2,5-4	4044211046781	10 ST



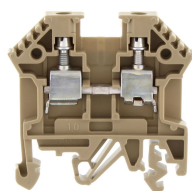
Feed-through terminal/block variant, Screw connection, Mounting type: Mounting rail TS 35/7.5 and TS 32, Rated cross-section: 4 mm<sup>2</sup>, Colour: Beige

Article number	Article name	GTIN (EAN)	Packaging unit
<u>1002.2</u>	KBL 2,5-4 BG	4044211000516	10 ST



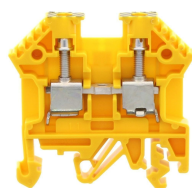
Feed-through terminal for direct mount/block variant, Screw connection, Mounting type: Mounting surface, Rated cross-section: 4 mm<sup>2</sup>, Width: 6 mm, Colour: Beige

Article number	Article name	GTIN (EAN)	Packaging unit
<u>1388.2</u>	KBL 2,5-4-D BG	4044211044299	100



Feed-through terminal, Screw connection, Mounting type: Mounting rail TS 35/7.5 and TS 32, Rated cross-section: 4 mm<sup>2</sup>, Width: 6 mm, Colour: Beige

Article number	Article name	GTIN (EAN)	Packaging unit
<u>1001.2</u>	RK 2,5-4 BG	4044211000240	100



Feed-through terminal, Screw connection, Mounting type: Mounting rail TS 35/7.5 and TS 32, Rated cross-section: 4 mm<sup>2</sup>, Width: 6 mm, Colour: Black-yellow

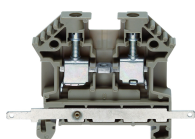
Article number	Article name	GTIN (EAN)	Packaging unit
<u>1563.2</u>	RK 2,5-4/PE BKYE	4044211047344	100 ST

### ##INVERSE##CONTA-CONNECT



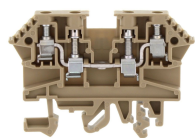
Feed-through terminal, Screw connection, Mounting type: Mounting rail TS 35/7.5, Rated cross-section: 4 mm<sup>2</sup>, Width: 6 mm, Colour: Black

Article number	Article name	GTIN (EAN)	Packaging unit
<u>1748.4</u>	RK 2,5-4 PA-G BK	4044211141134	100 ST



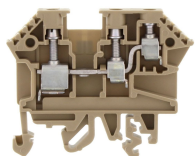
Feed-through terminal, Screw connection, Mounting type: Mounting rail TS 35/7.5, Rated cross-section: 4 mm<sup>2</sup>, Width: 6 mm, Colour: Beige

Article number	Article name	GTIN (EAN)	Packaging unit
<u>1167.2</u>	RK 2,5-4/35/SAS BG	4044211128623	100



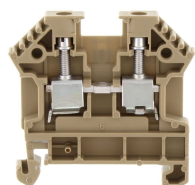
Feed-through terminal, Screw connection, Mounting type: Mounting rail TS 35/7.5 and TS 32, Rated cross-section: 4 mm<sup>2</sup>, Width: 6 mm, Colour: Beige

Article number	Article name	GTIN (EAN)	Packaging unit
<u>1211.2</u>	RK 2,5-4/ZRL BG	4044211028558	100



Feed-through terminal, Screw connection, Mounting type: Mounting rail TS 35/7.5 and TS 32, Rated cross-section: 4 mm<sup>2</sup>, Width: 6 mm, Colour: Beige

Article number	Article name	GTIN (EAN)	Packaging unit
<u>1210.2</u>	RK 2,5-4/ZR BG	4044211028459	100



Feed-through terminal, Screw connection, Mounting type: Mounting rail TS 35/7.5, Rated cross-section: 4 mm<sup>2</sup>, Width: 6 mm, Colour: Beige

Article number	Article name	GTIN (EAN)	Packaging unit
<u>1577.2</u>	RK 2,5-4/35 BG	4044211047566	100



Feed-through terminal, Screw connection, Mounting type: Mounting rail TS 35/7.5, Rated cross-section: 10 mm<sup>2</sup>, Width: 8 mm, Colour: Black

Article number	Article name	GTIN (EAN)	Packaging unit
<u>1749.4</u>	RK 6-10 PA-G BK	4044211141141	100 ST