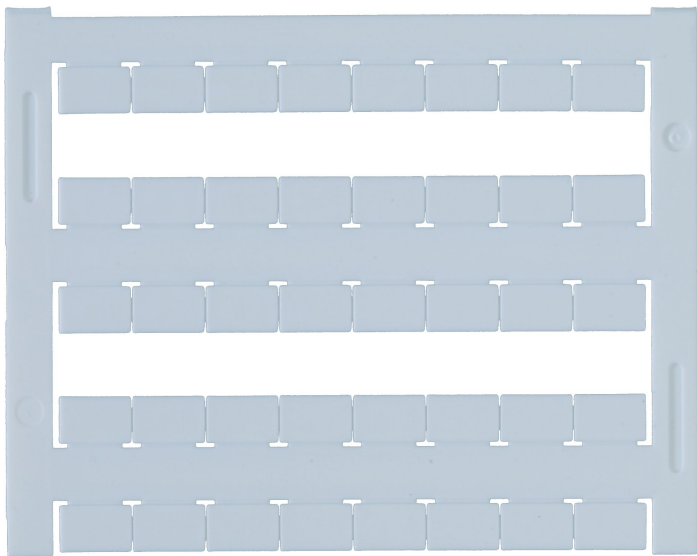


Data sheet

9323.7 PMC SB 8/40 WH



Terminal marker / Pocket Maxicard, Length: 5 mm, Width: 8 mm, Colour: White

RAL: 9010

Business data

Article number	9323.7
Article name	PMC SB 8/40 WH
GTIN (EAN)	4044211129231
Packaging unit	400
Quantity unit	PC
Number of markers per card	40 ST
Number of markers per row	8 ST
Weight per piece (not including packaging)	0.11 g
Weight per piece (including packaging)	0.14 g
Unit of weight	G
Customs number	39269097
Country of origin	DE
Product description	Terminal marker / Pocket Maxicard
Colour	White

Technical data

Dimensions

Length	5 mm
Width	8 mm
Terminal width	≥ 8,00 mm

Materials

Marker material	Polyamide 6.6
Flammability class UL 94	V-2
Working temperature, min.	-40 °C
Working temperature, max.	105 °C
Halogen-free	✓

Print

Printing process	Thermal transfer
Number of characters, horizontal	5
Rows when using font size 1.6 and plotter pen 0.25, horizontally aligned text	2
Number of characters, vertical	3
Rows when using font size 1.6 and plotter pen 0.25, vertically aligned text	3

Environmental Product Compliance

REACH Conform	yes
REACH Reference date	2023-06-14
REACH Candidate Substance Note	No
RoHS Conform	yes

Media

Accessories

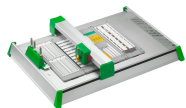
Labelling pen



Labelling pen for manual writing, Water resistant and smudge-proof, Line width 0.4 mm, Ink colour: Black

Article number	Article name	GTIN (EAN)	Packaging unit
<u>2034.0</u>	BS-1	4044211048365	10 ST

Plotter



Plotter marking system

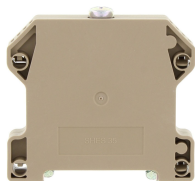
Article number	Article name	GTIN (EAN)	Packaging unit
<u>1610.0</u>	EMS-3 Easy-Marking-System DIN A3	4044211103187	1 ST

##INVERSE##CONTA-CONNECT



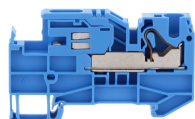
End stop, Mounting type: Mounting rail TS 35/7.5 and TS 35/15, Width: 8 mm, Colour: Beige

Article number	Article name	GTIN (EAN)	Packaging unit
<u>17250.2</u>	SES 35 BG	4044211178253	50



End stop, Mounting type: Mounting rail TS 35/7.5 and TS 35/15, Width: 13.4 mm, Colour: Beige

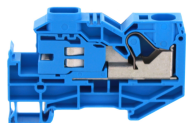
Article number	Article name	GTIN (EAN)	Packaging unit
<u>17259.2</u>	SHES 35 BG	4044211190903	20 ST



Neutral-disconnect terminal, Push-in connection, Mounting type: Mounting rail TS 35/7.5, Rated cross-section: 10 mm², Width: 8.1 mm, Colour: Blue

Article number	Article name	GTIN (EAN)	Packaging unit
<u>3274.5</u>	FNT 6-10 BU	4044211138981	100 ST

##INVERSE##CONTA-CONNECT



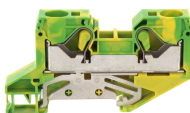
Neutral-disconnect terminal, Push-in connection, Mounting type: Mounting rail TS 35/7.5, Rated cross-section: 16 mm², Width: 12.1 mm, Colour: Blue

Article number	Article name	GTIN (EAN)	Packaging unit
<u>3275.5</u>	FNT 16 BU	4044211138998	50 ST



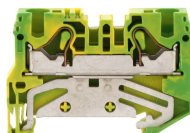
PE installation terminal, Push-in connection, Mounting type: Mounting rail TS 35/7.5, Rated cross-section: 10 mm², Width: 8.1 mm, Colour: Green-yellow

Article number	Article name	GTIN (EAN)	Packaging unit
<u>3217.2</u>	FSLI 6-10/3A GNYE	4044211199944	50 ST



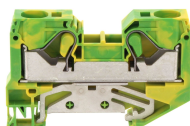
PE installation terminal, Push-in connection, Mounting type: Mounting rail TS 35/7.5, Colour: Green-yellow

Article number	Article name	GTIN (EAN)	Packaging unit
<u>3281.2</u>	FSLI 16/2A GNYE	4044211139186	50 ST



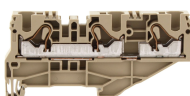
PE installation terminal, Push-in connection, Mounting type: Mounting rail TS 35/7.5, Rated cross-section: 10 mm², Width: 8.1 mm, Colour: Green-yellow

Article number	Article name	GTIN (EAN)	Packaging unit
<u>3280.2</u>	FSLI 6-10 GNYE	4044211139100	100 ST



Protective earth terminal, Push-in connection, Mounting type: Mounting rail TS 35/7.5, Colour: Green-yellow

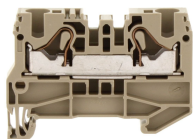
Article number	Article name	GTIN (EAN)	Packaging unit
<u>3299.2</u>	FSL 16/2A GNYE	4044211199869	50 ST



Feed-through installation terminal, Push-in connection, Mounting type: Mounting rail TS 35/7.5, Rated cross-section: 10 mm², Width: 8.1 mm, Colour: Beige

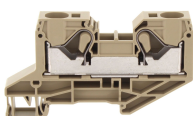
Article number	Article name	GTIN (EAN)	Packaging unit
<u>3216.2</u>	FRKI 6-10/3A BG	4044211199913	50

##INVERSE##CONTA-CONNECT



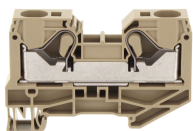
Feed-through installation terminal, Push-in connection, Mounting type: Mounting rail TS 35/7.5, Rated cross-section: 10 mm², Width: 8.1 mm, Colour: Beige

Article number	Article name	GTIN (EAN)	Packaging unit
<u>3277.2</u>	FRKI 6-10 BG	4044211139032	100



Feed-through installation terminal, Push-in connection, Mounting type: Mounting rail TS 35/7.5, Colour: Beige

Article number	Article name	GTIN (EAN)	Packaging unit
<u>3278.2</u>	FRKI 16/2A BG	4044211139063	50



Feed-through terminal, Push-in connection, Mounting type: Mounting rail TS 35/7.5, Colour: Beige

Article number	Article name	GTIN (EAN)	Packaging unit
<u>3294.2</u>	FRK 16/2A BG	4044211199838	50



Protective earth terminal, Tension-spring connection, Mounting type: Mounting rail TS 35/7.5, Rated cross-section: 6 mm², Width: 8.1 mm, Colour: Green-yellow

Article number	Article name	GTIN (EAN)	Packaging unit
<u>3589.2</u>	ZSL 6/2A GNYE	4044211151973	100 ST



Protective earth terminal, Tension-spring connection, Mounting type: Mounting rail TS 35/7.5, Rated cross-section: 16 mm², Width: 12.1 mm, Colour: Green-yellow

Article number	Article name	GTIN (EAN)	Packaging unit
<u>3637.2</u>	ZSL 16/2A GNYE	4044211152147	50 ST



Ex protective-earth terminal ATEX-certified Tension-spring connection, Mounting type: Mounting rail TS 35/7.5, Rated cross-section: 6 mm², Width: 8.1 mm, Colour: Green-yellow

Article number	Article name	GTIN (EAN)	Packaging unit
<u>1725.2</u>	ZSL 6/2A Ex GNYE	4044211059453	100 ST

##INVERSE##CONTA-CONNECT



Ex feed-through terminal ATEX-certified, Tension-spring connection, Mounting type: Mounting rail TS 35/7.5, Rated cross-section: 6 mm², Width: 8.1 mm, Colour: Beige

Article number	Article name	GTIN (EAN)	Packaging unit
<u>1719.2</u>	ZRK 6/2A Ex BG	4044211059279	100



Ex protective-earth terminal ATEX-certified Tension-spring connection, Mounting type: Mounting rail TS 35/7.5, Rated cross-section: 10 mm², Width: 10.1 mm, Colour: Green-yellow

Article number	Article name	GTIN (EAN)	Packaging unit
<u>1726.2</u>	ZSL 10/2A Ex GNYE	4044211059583	50 ST



Protective earth terminal, Tension-spring connection, Mounting type: Mounting rail TS 35/7.5, Rated cross-section: 10 mm², Width: 10.1 mm, Colour: Green-yellow

Article number	Article name	GTIN (EAN)	Packaging unit
<u>3598.2</u>	ZSL 10/2A GNYE	4044211152000	50 ST



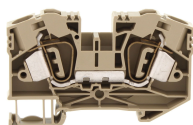
Feed-through terminal, Tension-spring connection, Mounting type: Mounting rail TS 35/7.5, Rated cross-section: 6 mm², Width: 8.1 mm, Colour: Beige

Article number	Article name	GTIN (EAN)	Packaging unit
<u>3581.2</u>	ZRK 6/2A BG	4044211151867	100



Feed-through terminal, Tension-spring connection, Mounting type: Mounting rail TS 35/7.5, Rated cross-section: 16 mm², Width: 12.1 mm, Colour: Beige

Article number	Article name	GTIN (EAN)	Packaging unit
<u>3636.2</u>	ZRK 16/2A BG	4044211152130	50



Ex feed-through terminal ATEX-certified, Tension-spring connection, Mounting type: Mounting rail TS 35/7.5, Rated cross-section: 16 mm², Width: 12.1 mm, Colour: Beige

Article number	Article name	GTIN (EAN)	Packaging unit
<u>1721.2</u>	ZRK 16/2A Ex BG	4044211080143	50

##INVERSE##CONTA-CONNECT



Feed-through terminal, Tension-spring connection, Mounting type: Mounting rail TS 35/7.5, Rated cross-section: 10 mm², Width: 10.1 mm, Colour: Beige

Article number	Article name	GTIN (EAN)	Packaging unit
<u>3597.2</u>	ZRK 10/2A BG	4044211151997	50



Ex feed-through terminal ATEX-certified, Tension-spring connection, Mounting type: Mounting rail TS 35/7.5, Rated cross-section: 10 mm², Width: 10.1 mm, Colour: Beige

Article number	Article name	GTIN (EAN)	Packaging unit
<u>1720.2</u>	ZRK 10/2A Ex BG	4044211059569	50



Measurement pick-off terminal, Screw connection, Mounting type: On base, Rated cross-section: 10 mm², Width: 8.3 mm, Colour: Beige

Article number	Article name	GTIN (EAN)	Packaging unit
<u>17122.2</u>	SMAG 10/6 BG	4044211172121	10 ST



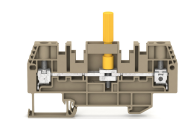
Measurement pick-off terminal, Screw connection, Mounting type: On base, Rated cross-section: 6 mm², Width: 8.3 mm, Colour: Beige

Article number	Article name	GTIN (EAN)	Packaging unit
<u>17135.2</u>	SMAG 16/6 BG	4044211181093	10 ST



Measurement pick-off terminal, Screw connection, Mounting type: On base, Rated cross-section: 6 mm², Width: 8.3 mm, Colour: Beige

Article number	Article name	GTIN (EAN)	Packaging unit
<u>17148.2</u>	SMAG 35/6 BG	4044211186685	50



Test disconnect terminal, Screw connection, Mounting type: Mounting rail TS 35/7.5, Rated cross-section: 6 mm², Width: 8.1 mm, Colour: Beige

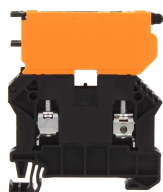
Article number	Article name	GTIN (EAN)	Packaging unit
<u>17523.2</u>	SPTK 6/LT/HB BG	4044211209223	50 ST

##INVERSE##CONTA-CONNECT



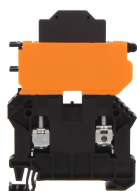
Test disconnect terminal, Screw connection, Mounting type: Mounting rail TS 35/7.5,
Rated cross-section: 6 mm², Width: 8.1 mm, Colour: Beige

Article number	Article name	GTIN (EAN)	Packaging unit
<u>17524.2</u>	SPTK 6/LT/STBI/YE BG	4044211209919	50 ST



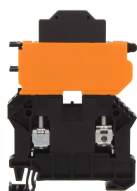
Fuse-disconnect terminal, Screw connection, Mounting type: Mounting rail TS 35/7.5,
Rated cross-section: 6 mm², Width: 8.1 mm, Colour: Black

Article number	Article name	GTIN (EAN)	Packaging unit
<u>17151.4</u>	SSIK 6/2A BK	4044211188993	50 ST



Fuse-disconnect terminal, Screw connection, Mounting type: Mounting rail TS 35/7.5,
Rated cross-section: 6 mm², Width: 8.1 mm, Colour: Black

Article number	Article name	GTIN (EAN)	Packaging unit
<u>17176.4</u>	SSIK 6/2A/LED 30-60V AC/DC BK	4044211188931	50 ST



Fuse-disconnect terminal, Screw connection, Mounting type: Mounting rail TS 35/7.5,
Rated cross-section: 6 mm², Width: 8.1 mm, Colour: Black

Article number	Article name	GTIN (EAN)	Packaging unit
<u>17178.4</u>	SSIK 6/2A/LED 500V AC/DC BK	4044211188948	50 ST



Test disconnect terminal, Screw connection, Mounting type: Mounting rail TS 35/7.5,
Rated cross-section: 6 mm², Width: 8.1 mm, Colour: Beige

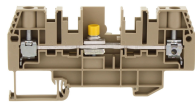
Article number	Article name	GTIN (EAN)	Packaging unit
<u>17520.2</u>	SPTK 6/DU BG	4044211209650	50 ST



Test disconnect terminal, Screw connection, Mounting type: Mounting rail TS 35/7.5,
Rated cross-section: 6 mm², Width: 8.1 mm, Colour: Beige

Article number	Article name	GTIN (EAN)	Packaging unit
<u>17521.2</u>	SPTK 6/LT BG	4044211209162	50 ST

##INVERSE##CONTA-CONNECT



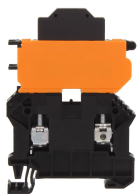
Test disconnect terminal, Screw connection, Mounting type: Mounting rail TS 35/7.5, Rated cross-section: 6 mm², Width: 8.1 mm, Colour: Beige

Article number	Article name	GTIN (EAN)	Packaging unit
<u>17522.2</u>	SPTK 6/QT BG	4044211209216	50 ST



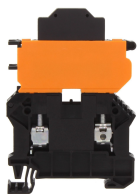
Test disconnect terminal, Screw connection, Mounting type: Mounting rail TS 35/7.5, Rated cross-section: 6 mm², Width: 8.1 mm, Colour: Beige

Article number	Article name	GTIN (EAN)	Packaging unit
<u>17525.2</u>	SPTK 6/LT/STBI/BU BG	4044211209926	50 ST



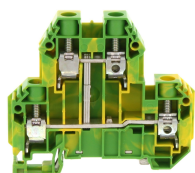
Fuse-disconnect terminal, Screw connection, Mounting type: Mounting rail TS 35/7.5, Rated cross-section: 6 mm², Width: 8.1 mm, Colour: Black

Article number	Article name	GTIN (EAN)	Packaging unit
<u>17175.4</u>	SSIK 6/2A/LED 12-30V AC/DC BK	4044211188924	50 ST



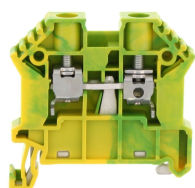
Fuse-disconnect terminal, Screw connection, Mounting type: Mounting rail TS 35/7.5, Rated cross-section: 6 mm², Width: 8.1 mm, Colour: Black

Article number	Article name	GTIN (EAN)	Packaging unit
<u>17177.4</u>	SSIK 6/2A/LED 110-250V AC/DC BK	4044211188955	50 ST



Protective-earth double-level terminal, Screw connection, Mounting type: Mounting rail TS 35/7.5, Rated cross-section: 10 mm², Width: 10.1 mm, Colour: Green-yellow

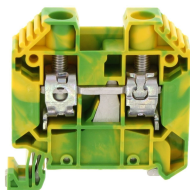
Article number	Article name	GTIN (EAN)	Packaging unit
<u>17192.2</u>	SSLD 10 GNYE	4044211190804	50 ST



Protective earth terminal, Screw connection, Mounting type: Mounting rail TS 35/7.5, Rated cross-section: 10 mm², Width: 8 mm, Colour: Green-yellow

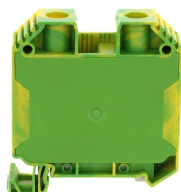
Article number	Article name	GTIN (EAN)	Packaging unit
<u>17111.2</u>	SSL 6/2A GNYE	4044211141769	100 ST

##INVERSE##CONTA-CONNECT



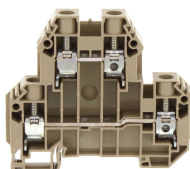
Protective earth terminal, Screw connection, Mounting type: Mounting rail TS 35/7.5, Rated cross-section: 16 mm², Width: 10 mm, Colour: Green-yellow

Article number	Article name	GTIN (EAN)	Packaging unit
<u>17131.2</u>	SSL 16/2A/IS GNYE	4044211181079	50 ST



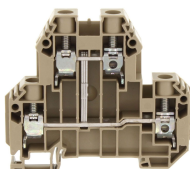
Protective earth terminal, Screw connection, Mounting type: Mounting rail TS 35/7.5, Rated cross-section: 35 mm², Width: 16.1 mm, Colour: Green-yellow

Article number	Article name	GTIN (EAN)	Packaging unit
<u>17147.2</u>	SSL 35/2A/IS GNYE	4044211186678	20 ST



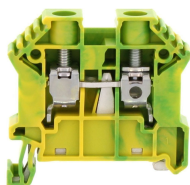
Double-level terminal, Screw connection, Mounting type: Mounting rail TS 35/7.5, Rated cross-section: 10 mm², Width: 10.1 mm, Colour: Beige

Article number	Article name	GTIN (EAN)	Packaging unit
<u>17190.2</u>	SRKD 10 BG	4044211190767	50



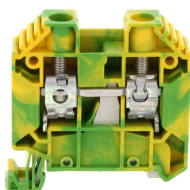
Double-level terminal, Screw connection, Mounting type: Mounting rail TS 35/7.5, Rated cross-section: 10 mm², Width: 10.1 mm, Colour: Beige

Article number	Article name	GTIN (EAN)	Packaging unit
<u>17191.2</u>	SRKD 10/SV BG	4044211190781	50



Protective earth terminal, Screw connection, Mounting type: Mounting rail TS 35/7.5, Rated cross-section: 16 mm², Width: 10 mm, Colour: Green-yellow

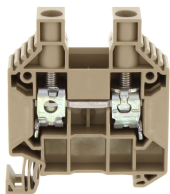
Article number	Article name	GTIN (EAN)	Packaging unit
<u>17115.2</u>	SSL 10/2A GNYE	4044211141806	100 ST



Protective earth terminal, Screw connection, Mounting type: Mounting rail TS 35/7.5, Rated cross-section: 16 mm², Width: 12.1 mm, Colour: Green-yellow

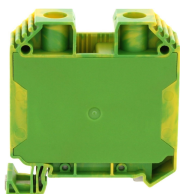
Article number	Article name	GTIN (EAN)	Packaging unit
<u>17130.2</u>	SSL 16/2A GNYE	4044211181062	50 ST

##INVERSE##CONTA-CONNECT



Feed-through terminal, Screw connection, Mounting type: Mounting rail TS 35/7.5, Rated cross-section: 16 mm², Width: 12.1 mm, Colour: Beige

Article number	Article name	GTIN (EAN)	Packaging unit
<u>17134.2</u>	SRK 16/2A/H BG	4044211206192	50 ST



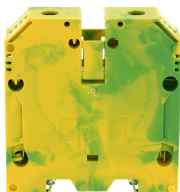
Protective earth terminal, Screw connection, Mounting type: Mounting rail TS 35/7.5, Rated cross-section: 35 mm², Width: 16.1 mm, Colour: Green-yellow

Article number	Article name	GTIN (EAN)	Packaging unit
<u>17145.2</u>	SSL 35/2A GNYE	4044211186661	20 ST



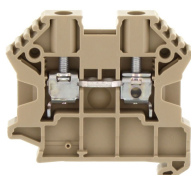
Protective earth terminal, Screw connection, Mounting type: Mounting rail TS 35/7.5, Rated cross-section: 50 mm², Width: 18.5 mm, Colour: Green-yellow

Article number	Article name	GTIN (EAN)	Packaging unit
<u>17158.2</u>	SSL 50/2A GNYE	4044211186739	10 ST



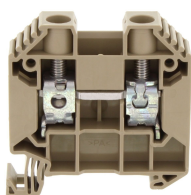
Protective earth terminal, Screw connection, Mounting type: Mounting rail TS 35/7.5, Rated cross-section: 70 mm², Width: 20.5 mm, Colour: Green-yellow

Article number	Article name	GTIN (EAN)	Packaging unit
<u>17163.2</u>	SSL 70/2A GNYE	4044211189297	10 ST



Feed-through terminal, Screw connection, Mounting type: Mounting rail TS 35/7.5, Rated cross-section: 16 mm², Width: 10 mm, Colour: Beige

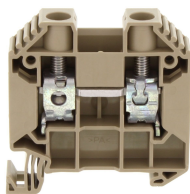
Article number	Article name	GTIN (EAN)	Packaging unit
<u>17113.2</u>	SRK B 10/2A BG	4044211141783	100



Feed-through terminal, Screw connection, Mounting type: Mounting rail TS 35/7.5, Rated cross-section: 16 mm², Width: 12.1 mm, Colour: Beige

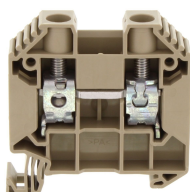
Article number	Article name	GTIN (EAN)	Packaging unit
<u>17124.2</u>	SRK 16/2A BG	4044211180942	50

##INVERSE##CONTA-CONNECT



Feed-through terminal, Screw connection, Mounting type: Mounting rail TS 35/7.5, Rated cross-section: 16 mm², Width: 12.1 mm, Colour: Beige

Article number	Article name	GTIN (EAN)	Packaging unit
<u>17124.2</u>	SRK 16/2A BG	4044211180942	50



Feed-through terminal, Screw connection, Mounting type: Mounting rail TS 35/7.5, Rated cross-section: 16 mm², Width: 12.1 mm, Colour: Beige

Article number	Article name	GTIN (EAN)	Packaging unit
<u>17127.2</u>	SRK 16/2A/Z/IS BG	4044211181048	50 ST



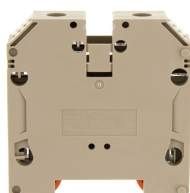
Feed-through terminal, Screw connection, Mounting type: Mounting rail TS 35/7.5, Rated cross-section: 16 mm², Width: 12.1 mm, Colour: Black-yellow

Article number	Article name	GTIN (EAN)	Packaging unit
<u>17128.2</u>	SRK 16/2A/PE BKYE	4044211199739	50 ST



Feed-through terminal, Screw connection, Mounting type: Mounting rail TS 35/7.5, Rated cross-section: 35 mm², Width: 16.1 mm, Colour: Beige

Article number	Article name	GTIN (EAN)	Packaging unit
<u>17141.2</u>	SRK 35/2A/Z BG	4044211186630	20 ST



Feed-through terminal, Screw connection, Mounting type: Mounting rail TS 35/7.5, Rated cross-section: 50 mm², Width: 18.5 mm, Colour: Beige

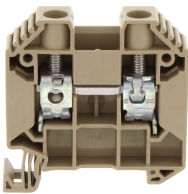
Article number	Article name	GTIN (EAN)	Packaging unit
<u>17156.2</u>	SRK 50/2A BG	4044211186715	10



Feed-through terminal, Screw connection, Mounting type: Mounting rail TS 35/7.5, Rated cross-section: 50 mm², Width: 18.5 mm, Colour: Beige

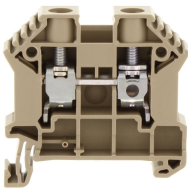
Article number	Article name	GTIN (EAN)	Packaging unit
<u>17156.2</u>	SRK 50/2A BG	4044211186715	10

##INVERSE##CONTA-CONNECT



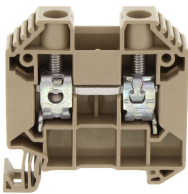
Feed-through terminal, Screw connection, Mounting type: Mounting rail TS 35/7.5, Rated cross-section: 16 mm², Width: 12.1 mm, Colour: Beige

Article number	Article name	GTIN (EAN)	Packaging unit
<u>17125.2</u>	SRK 16/2A/Z BG	4044211181024	50 ST



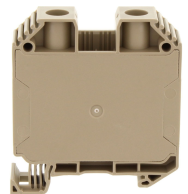
Feed-through terminal, Screw connection, Mounting type: Mounting rail TS 35/7.5, Rated cross-section: 16 mm², Width: 10 mm, Colour: Beige

Article number	Article name	GTIN (EAN)	Packaging unit
<u>17112.2</u>	SRK 10/2A BG	4044211141776	100



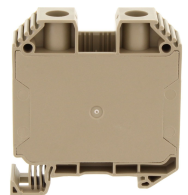
Feed-through terminal, Screw connection, Mounting type: Mounting rail TS 35/7.5, Rated cross-section: 16 mm², Width: 12.1 mm, Colour: Beige

Article number	Article name	GTIN (EAN)	Packaging unit
<u>17125.2</u>	SRK 16/2A/Z BG	4044211181024	50 ST



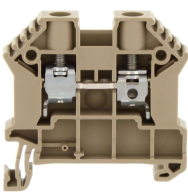
Feed-through terminal, Screw connection, Mounting type: Mounting rail TS 35/7.5, Rated cross-section: 35 mm², Width: 16.1 mm, Colour: Beige

Article number	Article name	GTIN (EAN)	Packaging unit
<u>17140.2</u>	SRK 35/2A BG	4044211186616	20



Feed-through terminal, Screw connection, Mounting type: Mounting rail TS 35/7.5, Rated cross-section: 35 mm², Width: 16.1 mm, Colour: Beige

Article number	Article name	GTIN (EAN)	Packaging unit
<u>17142.2</u>	SRK 35/2A/IS BG	4044211186647	20



Feed-through terminal, Screw connection, Mounting type: Mounting rail TS 35/7.5, Rated cross-section: 10 mm², Width: 8 mm, Colour: Beige

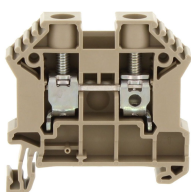
Article number	Article name	GTIN (EAN)	Packaging unit
<u>17110.2</u>	SRK 6/2A/Z BG	4044211141752	100 ST

##INVERSE##CONTA-CONNECT



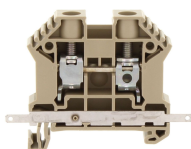
Feed-through terminal, Screw connection, Mounting type: Mounting rail TS 35/7.5, Rated cross-section: 120 mm², Width: 27 mm, Colour: Black-yellow

Article number	Article name	GTIN (EAN)	Packaging unit
<u>17167.2</u>	SRK 120/2A/PE BKYE	4044211189396	5 ST



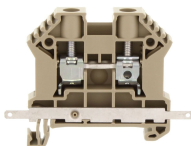
Feed-through terminal, Screw connection, Mounting type: Mounting rail TS 35/7.5, Rated cross-section: 16 mm², Width: 10 mm, Colour: Beige

Article number	Article name	GTIN (EAN)	Packaging unit
<u>17114.2</u>	SRK 10/2A/Z BG	4044211141790	100



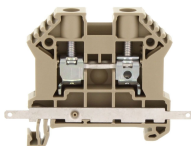
Feed-through terminal, Screw connection, Mounting type: Mounting rail TS 35/7.5, Rated cross-section: 16 mm², Width: 10 mm, Colour: Beige

Article number	Article name	GTIN (EAN)	Packaging unit
<u>17118.2</u>	SRK 10/2A SAS BG	4044211149024	80



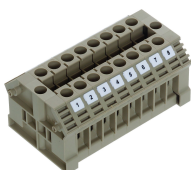
Feed-through terminal, Screw connection, Mounting type: Mounting rail TS 35/7.5, Rated cross-section: 10 mm², Width: 8 mm, Colour: Beige

Article number	Article name	GTIN (EAN)	Packaging unit
<u>17117.2</u>	SRK 6/2A SAS BG	4044211149000	80



Feed-through terminal, Screw connection, Mounting type: Mounting rail TS 35/7.5, Rated cross-section: 10 mm², Width: 8 mm, Colour: Beige

Article number	Article name	GTIN (EAN)	Packaging unit
<u>17117.2</u>	SRK 6/2A SAS BG	4044211149000	80



Feed-through terminal for direct mount/block variant, Screw connection, Mounting type: Mounting surface, Rated cross-section: 10 mm², Colour: Beige

Article number	Article name	GTIN (EAN)	Packaging unit
<u>1386.2</u>	KBL 6-10/10-D BG	4044211044275	10

##INVERSE##CONTA-CONNECT



Feed-through terminal, Screw connection, Mounting type: Mounting rail TS 35/7.5, Rated cross-section: 35 mm², Width: 16.1 mm, Colour: Black-yellow

Article number	Article name	GTIN (EAN)	Packaging unit
<u>17144.2</u>	SRK 35/2A/PE BKYE	4044211199722	20 ST



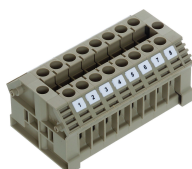
Feed-through terminal for direct mount/block variant, Screw connection, Mounting type: Mounting surface, Rated cross-section: 10 mm², Width: 8 mm, Colour: Beige

Article number	Article name	GTIN (EAN)	Packaging unit
<u>1389.2</u>	KBL 6-10-D BG	4044211044305	100



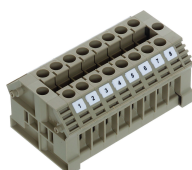
Feed-through terminal, Screw connection, Mounting type: Mounting rail TS 35/7.5, Rated cross-section: 16 mm², Width: 10 mm, Colour: Black-yellow

Article number	Article name	GTIN (EAN)	Packaging unit
<u>17133.2</u>	SRK 10/2A/PE BKYE	4044211200725	100 ST



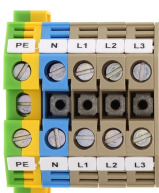
Feed-through terminal for direct mount/block variant, Screw connection, Mounting type: Mounting surface, Rated cross-section: 10 mm², Colour: Beige

Article number	Article name	GTIN (EAN)	Packaging unit
<u>1386.2</u>	KBL 6-10/10-D BG	4044211044275	10



Feed-through terminal for direct mount/block variant, Screw connection, Mounting type: Mounting surface, Rated cross-section: 10 mm², Colour: Beige

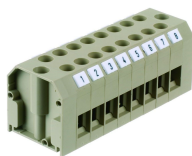
Article number	Article name	GTIN (EAN)	Packaging unit
<u>1386.2</u>	KBL 6-10/10-D BG	4044211044275	10



Five-wire mains-connection block, Screw connection, Mounting type: Mounting rail TS 35/7.5 and TS 32, Rated cross-section: 10 mm², Colour: Multi-coloured

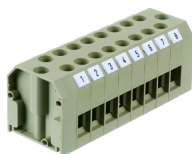
Article number	Article name	GTIN (EAN)	Packaging unit
<u>1525.2</u>	FNAB 6-10	4044211046804	10 ST

##INVERSE##CONTA-CONNECT



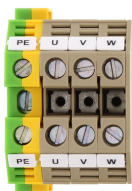
Feed-through terminal for direct mount, Screw connection, Mounting type: Mounting surface, Rated cross-section: 10 mm², Colour: Beige

Article number	Article name	GTIN (EAN)	Packaging unit
<u>1500.2</u>	BA 10/2 BG	4044211045494	50 ST



Feed-through terminal for direct mount, Screw connection, Mounting type: Mounting surface, Rated cross-section: 10 mm², Colour: Beige

Article number	Article name	GTIN (EAN)	Packaging unit
<u>1508.2</u>	BA 10/10 BG	4044211046002	10 ST



Four-wire motor-connection block, Screw connection, Mounting type: Mounting rail TS 35/7.5 and TS 32, Rated cross-section: 10 mm², Colour: Multi-coloured

Article number	Article name	GTIN (EAN)	Packaging unit
<u>1522.2</u>	VMAB 6-10	4044211046699	10 ST



Feed-through terminal for direct mount, Screw connection, Mounting type: Mounting surface, Rated cross-section: 10 mm², Colour: Beige

Article number	Article name	GTIN (EAN)	Packaging unit
<u>1510.2</u>	BA 10/12 BG	4044211046101	10 ST



Feed-through terminal for direct mount, Screw connection, Mounting type: Mounting surface, Rated cross-section: 10 mm², Colour: Beige

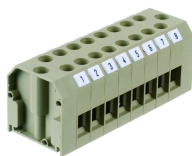
Article number	Article name	GTIN (EAN)	Packaging unit
<u>1502.2</u>	BA 10/4 BG	4044211045715	20 ST



Feed-through terminal for direct mount, Screw connection, Mounting type: Mounting surface, Rated cross-section: 10 mm², Colour: Beige

Article number	Article name	GTIN (EAN)	Packaging unit
<u>1504.2</u>	BA 10/6 BG	4044211045913	20 ST

##INVERSE##CONTA-CONNECT



Feed-through terminal for direct mount, Screw connection, Mounting type: Mounting surface, Rated cross-section: 10 mm², Colour: Beige

Article number	Article name	GTIN (EAN)	Packaging unit
<u>1510.2</u>	BKA 10/12 BG	4044211046101	10 ST



Feed-through terminal for direct mount, Screw connection, Mounting type: Mounting surface, Rated cross-section: 10 mm², Colour: Beige

Article number	Article name	GTIN (EAN)	Packaging unit
<u>1507.2</u>	BKA 10/9 BG	4044211045982	10 ST



Feed-through terminal for direct mount, Screw connection, Mounting type: Mounting surface, Rated cross-section: 10 mm², Colour: Beige

Article number	Article name	GTIN (EAN)	Packaging unit
<u>1509.2</u>	BKA 10/11 BG	4044211046071	10 ST



Feed-through terminal for direct mount, Screw connection, Mounting type: Mounting surface, Rated cross-section: 4 mm², Width: 6 mm, Colour: Black-yellow

Article number	Article name	GTIN (EAN)	Packaging unit
<u>1561.2</u>	BKA 4/1/PE BKYE	4044211047320	100 ST



Feed-through terminal for direct mount, Screw connection, Mounting type: Mounting surface, Rated cross-section: 10 mm², Colour: Beige

Article number	Article name	GTIN (EAN)	Packaging unit
<u>1507.2</u>	BKA 10/9 BG	4044211045982	10 ST



Feed-through terminal for direct mount, Screw connection, Mounting type: Mounting surface, Rated cross-section: 10 mm², Colour: Beige

Article number	Article name	GTIN (EAN)	Packaging unit
<u>1509.2</u>	BKA 10/11 BG	4044211046071	10 ST

##INVERSE##CONTA-CONNECT



Feed-through terminal for direct mount, Screw connection, Mounting type: Mounting surface, Rated cross-section: 10 mm², Colour: Beige

Article number	Article name	GTIN (EAN)	Packaging unit
<u>1509.2</u>	BA 10/11 BG	4044211046071	10 ST



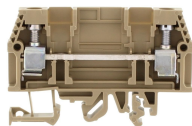
Feed-through terminal for direct mount, Screw connection, Mounting type: Mounting surface, Rated cross-section: 10 mm², Colour: Beige

Article number	Article name	GTIN (EAN)	Packaging unit
<u>1503.2</u>	BA 10/5 BG	4044211045821	20 ST



Feed-through terminal for direct mount, Screw connection, Mounting type: Mounting surface, Rated cross-section: 10 mm², Colour: Beige

Article number	Article name	GTIN (EAN)	Packaging unit
<u>1506.2</u>	BA 10/8 BG	4044211045968	10 ST



Test disconnect terminal, Screw connection, Mounting type: Mounting rail TS 35/7.5 and TS 32, Rated cross-section: 10 mm², Width: 8 mm, Colour: Beige

Article number	Article name	GTIN (EAN)	Packaging unit
<u>1134.2</u>	PTK 10/DU BG	4044211020293	50 ST



Test disconnect terminal, Screw connection, Mounting type: Mounting rail TS 35/7.5 and TS 32, Rated cross-section: 10 mm², Width: 8 mm, Colour: Beige

Article number	Article name	GTIN (EAN)	Packaging unit
<u>1134.2</u>	PTK 10/DU BG	4044211020293	50 ST



Fuse-disconnect terminal, Screw connection, Mounting type: Mounting rail TS 35/7.5 and TS 32, Rated cross-section: 10 mm², Width: 8 mm, Colour: Beige

Article number	Article name	GTIN (EAN)	Packaging unit
<u>1104.2</u>	SIK 10/LED(RD)/20-30V DC/40-60V AC BG	4044211016753	25 ST

##INVERSE##CONTA-CONNECT



Feed-through terminal for direct mount, Screw connection, Mounting type: Mounting surface, Rated cross-section: 2.5 mm², Width: 5 mm, Colour: Black-yellow

Article number	Article name	GTIN (EAN)	Packaging unit
<u>1560.2</u>	BAK 2,5/1/PE BKYE	4044211047313	100 ST



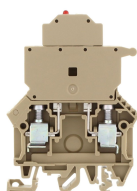
Test disconnect terminal, Screw connection, Mounting type: Mounting rail TS 35/7.5 and TS 32, Rated cross-section: 10 mm², Width: 8 mm, Colour: Beige

Article number	Article name	GTIN (EAN)	Packaging unit
<u>1130.2</u>	PTK 10/LT BG	4044211019853	50 ST



Test disconnect terminal, Screw connection, Mounting type: Mounting rail TS 35/7.5 and TS 32, Rated cross-section: 10 mm², Width: 8 mm, Colour: Beige

Article number	Article name	GTIN (EAN)	Packaging unit
<u>1131.2</u>	PTK 10/LT/STB BG	4044211019969	50 ST



Fuse-disconnect terminal, Screw connection, Mounting type: Mounting rail TS 35/7.5 and TS 32, Rated cross-section: 10 mm², Width: 8 mm, Colour: Beige

Article number	Article name	GTIN (EAN)	Packaging unit
<u>1104.2</u>	SIK 10/LED(RD)/20-30V DC/40-60V AC BG	4044211016753	25 ST



Test disconnect terminal, Screw connection, Mounting type: Mounting rail TS 35/7.5 and TS 32, Rated cross-section: 10 mm², Width: 8 mm, Colour: Beige

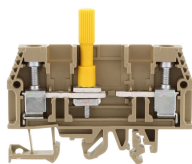
Article number	Article name	GTIN (EAN)	Packaging unit
<u>1131.2</u>	PTK 10/LT/STB BG	4044211019969	50 ST



Test disconnect terminal, Screw connection, Mounting type: Mounting rail TS 35/7.5 and TS 32, Rated cross-section: 10 mm², Width: 8 mm, Colour: Beige

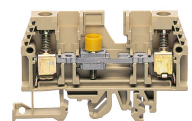
Article number	Article name	GTIN (EAN)	Packaging unit
<u>1135.2</u>	PTK 10/DU/STB BG	4044211020408	50 ST

##INVERSE##CONTA-CONNECT



Test disconnect terminal, Screw connection, Mounting type:Mounting rail TS 35/7.5 and TS 32, Rated cross-section: 10 mm², Width: 8 mm, Colour: Beige

Article number	Article name	GTIN (EAN)	Packaging unit
<u>17366.2</u>	PTK 10/LT/HB BG	4044211185145	50 ST



Test disconnect terminal, Screw connection, Mounting type:Mounting rail TS 35/7.5 and TS 32, Rated cross-section: 10 mm², Width: 8 mm, Colour: Beige

Article number	Article name	GTIN (EAN)	Packaging unit
<u>1132.2</u>	PTK 10/QT BG	4044211020071	50 ST



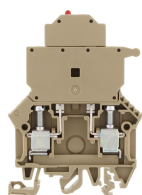
Test disconnect terminal, Screw connection, Mounting type:Mounting rail TS 35/7.5 and TS 32, Rated cross-section: 10 mm², Width: 8 mm, Colour: Beige

Article number	Article name	GTIN (EAN)	Packaging unit
<u>17367.2</u>	PTK 10/LT/STB/HB BG	4044211185152	50 ST



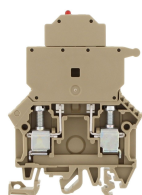
Test disconnect terminal, Screw connection, Mounting type:Mounting rail TS 35/7.5 and TS 32, Rated cross-section: 10 mm², Width: 8 mm, Colour: Beige

Article number	Article name	GTIN (EAN)	Packaging unit
<u>17367.2</u>	PTK 10/LT/STB/HB BG	4044211185152	50 ST



Fuse-disconnect terminal, Screw connection, Mounting type:Mounting rail TS 35/7.5 and TS 32, Rated cross-section: 10 mm², Width: 8 mm, Colour: Beige

Article number	Article name	GTIN (EAN)	Packaging unit
<u>1103.2</u>	SIK 10/LED(RD)/12V DC/24V AC BG	4044211016548	25 ST



Fuse-disconnect terminal, Screw connection, Mounting type:Mounting rail TS 35/7.5 and TS 32, Rated cross-section: 10 mm², Width: 8 mm, Colour: Beige

Article number	Article name	GTIN (EAN)	Packaging unit
<u>1103.2</u>	SIK 10/LED(RD)/12V DC/24V AC BG	4044211016548	25 ST

##INVERSE##CONTA-CONNECT



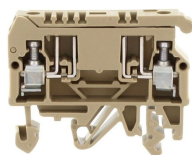
Fused terminal, Screw connection, Mounting type: Mounting rail TS 35/7.5 and TS 32, Rated cross-section: 10 mm², Width: 10 mm, Colour: Black

Article number	Article name	GTIN (EAN)	Packaging unit
<u>17365.4</u>	SIK 10/Z PA-G BK	4044211178390	25 ST



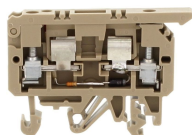
Fused terminal, Screw connection, Mounting type: Mounting rail TS 35/7.5 and TS 32, Rated cross-section: 10 mm², Width: 10 mm, Colour: Black

Article number	Article name	GTIN (EAN)	Packaging unit
<u>17365.4</u>	SIK 10/Z PA-G BK	4044211178390	25 ST



Fuse-disconnect terminal, Screw connection, Mounting type: Mounting rail TS 35/7.5 and TS 32, Rated cross-section: 4 mm², Width: 8 mm, Colour: Beige

Article number	Article name	GTIN (EAN)	Packaging unit
<u>1078.2</u>	STK 2 BG	4044211013745	100



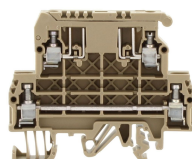
Fuse-disconnect terminal, Screw connection, Mounting type: Mounting rail TS 35/7.5 and TS 32, Rated cross-section: 4 mm², Width: 8 mm, Colour: Beige

Article number	Article name	GTIN (EAN)	Packaging unit
<u>2457.2</u>	STK 1/LED(RD)/115V AC BG	4044211052478	100 ST



Fuse-disconnect terminal, Screw connection, Mounting type: Mounting rail TS 35/7.5 and TS 32, Rated cross-section: 10 mm², Width: 10 mm, Colour: Beige

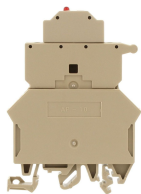
Article number	Article name	GTIN (EAN)	Packaging unit
<u>1110.2</u>	SIK 10/Z/LED(RD)/40-60V DC/80-120V AC BG	4044211017439	25 ST



Fuse-disconnect terminal, Screw connection, Mounting type: Mounting rail TS 35/7.5 and TS 32, Rated cross-section: 4 mm², Width: 8 mm, Colour: Beige

Article number	Article name	GTIN (EAN)	Packaging unit
<u>1079.2</u>	STKD 1 BG	4044211013905	50

##INVERSE##CONTA-CONNECT



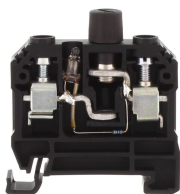
Fuse-disconnect terminal, Screw connection, Mounting type: Mounting rail TS 35/7.5 and TS 32, Rated cross-section: 10 mm², Width: 10 mm, Colour: Beige

Article number	Article name	GTIN (EAN)	Packaging unit
<u>1109.2</u>	SIK 10/Z/LED(RD)/20-30V DC/40-60V AC BG	4044211017323	25 ST



Fuse-disconnect terminal, Screw connection, Mounting type: Mounting rail TS 35/7.5 and TS 32, Rated cross-section: 10 mm², Width: 10 mm, Colour: Beige

Article number	Article name	GTIN (EAN)	Packaging unit
<u>1109.2</u>	SIK 10/Z/LED(RD)/20-30V DC/40-60V AC BG	4044211017323	25 ST



Fused terminal, Screw connection, Mounting type: Mounting rail TS 35/7.5, Rated cross-section: 10 mm², Width: 12.2 mm, Colour: Black

Article number	Article name	GTIN (EAN)	Packaging unit
<u>1375.4</u>	SK 1/35 230V AC G PA-G BK	4044211129941	20 ST



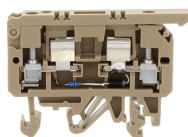
Fused terminal, Screw connection, Mounting type: Mounting rail TS 35/7.5, Rated cross-section: 10 mm², Width: 12.2 mm, Colour: Black

Article number	Article name	GTIN (EAN)	Packaging unit
<u>1380.4</u>	SK 1/35 24V DC LED(RD) PA-G BK	4044211129972	20 ST



Fused terminal with disconnect plug, Screw connection, Mounting type: Mounting rail TS 35/7.5 and TS 32, Rated cross-section: 10 mm², Width: 10 mm, Colour: Beige

Article number	Article name	GTIN (EAN)	Packaging unit
<u>17043.2</u>	SIK 10/Z/ST BG	4044211155810	25 ST



Fuse-disconnect terminal, Screw connection, Mounting type: Mounting rail TS 35/7.5 and TS 32, Rated cross-section: 4 mm², Width: 8 mm, Colour: Beige

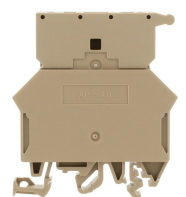
Article number	Article name	GTIN (EAN)	Packaging unit
<u>2454.2</u>	STK 1/LED(RD)/24V AC BG	4044211052447	100 ST

##INVERSE##CONTA-CONNECT



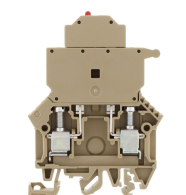
Fused terminal, Screw connection, Mounting type: Mounting rail TS 35/7.5, Rated cross-section: 10 mm², Width: 12.2 mm, Colour: Black

Article number	Article name	GTIN (EAN)	Packaging unit
<u>1380.4</u>	SK 1/35 24V DC LED(RD) PA-G BK	4044211129972	20 ST



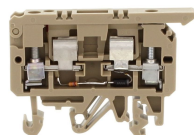
Fused terminal with disconnect plug, Screw connection, Mounting type: Mounting rail TS 35/7.5 and TS 32, Rated cross-section: 10 mm², Width: 10 mm, Colour: Beige

Article number	Article name	GTIN (EAN)	Packaging unit
<u>17043.2</u>	SIK 10/Z/ST BG	4044211155810	25 ST



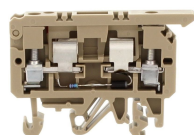
Fuse-disconnect terminal, Screw connection, Mounting type: Mounting rail TS 35/7.5 and TS 32, Rated cross-section: 10 mm², Width: 8 mm, Colour: Beige

Article number	Article name	GTIN (EAN)	Packaging unit
<u>1107.2</u>	SIK 10/2 LED's(RD)/24V DC BG	4044211016920	25 ST



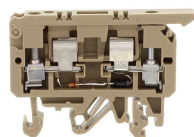
Fuse-disconnect terminal, Screw connection, Mounting type: Mounting rail TS 35/7.5 and TS 32, Rated cross-section: 4 mm², Width: 8 mm, Colour: Beige

Article number	Article name	GTIN (EAN)	Packaging unit
<u>2455.2</u>	STK 1/LED(RD)/48V AC BG	4044211052454	100 ST



Fuse-disconnect terminal, Screw connection, Mounting type: Mounting rail TS 35/7.5 and TS 32, Rated cross-section: 4 mm², Width: 8 mm, Colour: Beige

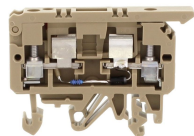
Article number	Article name	GTIN (EAN)	Packaging unit
<u>2453.2</u>	STK 1/LED(RD)/230V DC BG	4044211052430	100 ST



Fuse-disconnect terminal, Screw connection, Mounting type: Mounting rail TS 35/7.5 and TS 32, Rated cross-section: 4 mm², Width: 8 mm, Colour: Beige

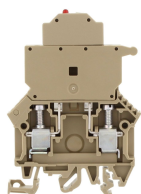
Article number	Article name	GTIN (EAN)	Packaging unit
<u>2455.2</u>	STK 1/LED(RD)/48V AC BG	4044211052454	100 ST

##INVERSE##CONTA-CONNECT



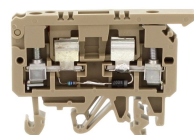
Fuse-disconnect terminal, Screw connection, Mounting type: Mounting rail TS 35/7.5 and TS 32, Rated cross-section: 4 mm², Width: 8 mm, Colour: Beige

Article number	Article name	GTIN (EAN)	Packaging unit
<u>2449.2</u>	STK 1/LED(RD)/24V DC BG	4044211052393	100 ST



Fuse-disconnect terminal, Screw connection, Mounting type: Mounting rail TS 35/7.5 and TS 32, Rated cross-section: 10 mm², Width: 8 mm, Colour: Beige

Article number	Article name	GTIN (EAN)	Packaging unit
<u>1106.2</u>	SIK 10/LED(RD)/115V DC/230V AC BG	4044211016913	25



Fuse-disconnect terminal, Screw connection, Mounting type: Mounting rail TS 35/7.5 and TS 32, Rated cross-section: 4 mm², Width: 8 mm, Colour: Beige

Article number	Article name	GTIN (EAN)	Packaging unit
<u>2458.2</u>	STK 1/LED(RD)/230V AC BG	4044211052485	100 ST



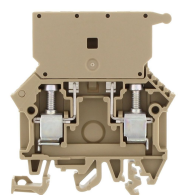
Fuse-disconnect terminal, Screw connection, Mounting type: Mounting rail TS 35/7.5 and TS 32, Rated cross-section: 10 mm², Width: 10 mm, Colour: Beige

Article number	Article name	GTIN (EAN)	Packaging unit
<u>1112.2</u>	SIK 10/Z/2 LED's(RD)/24V DC BG	4044211017477	25 ST



Fused terminal, Screw connection, Mounting type: Mounting rail TS 35/7.5, Rated cross-section: 10 mm², Width: 12.2 mm, Colour: Black

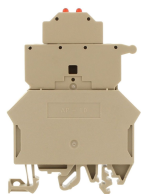
Article number	Article name	GTIN (EAN)	Packaging unit
<u>1067.4</u>	SK 1/35 48V DC LED(RD) PA-G BK	4044211129996	20 ST



Fuse-disconnect terminal, Screw connection, Mounting type: Mounting rail TS 35/7.5 and TS 32, Rated cross-section: 10 mm², Width: 8 mm, Colour: Beige

Article number	Article name	GTIN (EAN)	Packaging unit
<u>1101.2</u>	SIK 10 BG	4044211016388	50

##INVERSE##CONTA-CONNECT



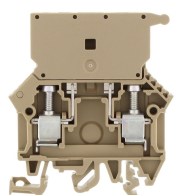
Fuse-disconnect terminal, Screw connection, Mounting type: Mounting rail TS 35/7.5 and TS 32, Rated cross-section: 10 mm², Width: 10 mm, Colour: Beige

Article number	Article name	GTIN (EAN)	Packaging unit
<u>1112.2</u>	SIK 10/Z/2 LED's(RD)/24V DC BG	4044211017477	25 ST



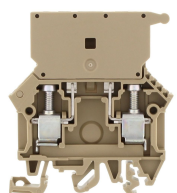
Fused terminal with screw cap for indicator fuses 5x25 mm, Screw connection, Mounting type: Mounting rail TS 35/7.5, Rated cross-section: 10 mm², Width: 12.2 mm, Colour: Black

Article number	Article name	GTIN (EAN)	Packaging unit
<u>1368.4</u>	SK 1/35 m.K. PA-G BK	4044211129811	20 ST



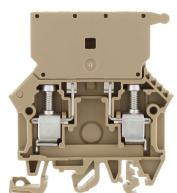
Fuse-disconnect terminal, Screw connection, Mounting type: Mounting rail TS 35/7.5 and TS 32, Rated cross-section: 10 mm², Width: 8 mm, Colour: Beige

Article number	Article name	GTIN (EAN)	Packaging unit
<u>1101.2</u>	SIK 10 BG	4044211016388	50



Fuse-disconnect terminal, Screw connection, Mounting type: Mounting rail TS 35/7.5 and TS 32, Rated cross-section: 10 mm², Width: 8 mm, Colour: Beige

Article number	Article name	GTIN (EAN)	Packaging unit
<u>1101.2</u>	SIK 10 BG	4044211016388	50



Fuse-disconnect terminal, Screw connection, Mounting type: Mounting rail TS 35/7.5 and TS 32, Rated cross-section: 10 mm², Width: 8 mm, Colour: Beige

Article number	Article name	GTIN (EAN)	Packaging unit
<u>1101.2</u>	SIK 10 BG	4044211016388	50



Fused terminal with screw cap for indicator fuses 5x25 mm, Screw connection, Mounting type: Mounting rail TS 35/7.5, Rated cross-section: 10 mm², Width: 12.2 mm, Colour: Black

Article number	Article name	GTIN (EAN)	Packaging unit
<u>1368.4</u>	SK 1/35 m.K. PA-G BK	4044211129811	20 ST

##INVERSE##CONTA-CONNECT



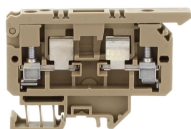
Disconnect terminal, Screw connection, Mounting type: Mounting rail TS 15/5.5, Rated cross-section: 2.5 mm², Width: 6 mm, Colour: Beige

Article number	Article name	GTIN (EAN)	Packaging unit
<u>1392.2</u>	TRK 1,5/15 BG	4044211044374	100



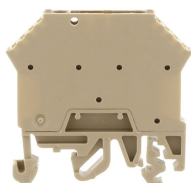
Fused terminal, Screw connection, Mounting type: Mounting rail TS 35/7.5 and TS 32, Rated cross-section: 10 mm², Width: 8 mm, Colour: Black

Article number	Article name	GTIN (EAN)	Packaging unit
<u>17364.4</u>	SIK 10 PA-G BK	4044211178406	50 ST



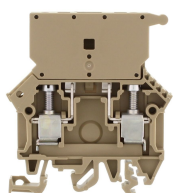
Fuse-disconnect terminal, Screw connection, Mounting type: Mounting rail TS 15/5.5, Rated cross-section: 4 mm², Width: 8 mm, Colour: Beige

Article number	Article name	GTIN (EAN)	Packaging unit
<u>2191.2</u>	STK 1/15 BG	4044211050160	100



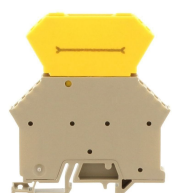
Disconnect terminal, Screw connection, Mounting type: Mounting rail TS 35/7.5 and TS 32, Rated cross-section: 2.5 mm², Width: 6 mm, Colour: Beige

Article number	Article name	GTIN (EAN)	Packaging unit
<u>1399.2</u>	TRK 1,5/STB BG	4044211044466	100 ST



Fused terminal with disconnect plug, Screw connection, Mounting type: Mounting rail TS 35/7.5 and TS 32, Rated cross-section: 10 mm², Width: 8 mm, Colour: Beige

Article number	Article name	GTIN (EAN)	Packaging unit
<u>17044.2</u>	SIK 10/ST/5x20 BG	4044211155827	25 ST



Disconnect terminal, Screw connection, Mounting type: Mounting rail TS 15/5.5, Rated cross-section: 2.5 mm², Width: 6 mm, Colour: Beige

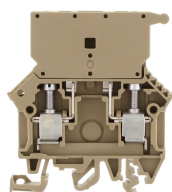
Article number	Article name	GTIN (EAN)	Packaging unit
<u>1397.2</u>	TRK 1,5/15/STB/DS BG	4044211044442	50 ST

##INVERSE##CONTA-CONNECT



Disconnect terminal, Screw connection, Mounting type:Mounting rail TS 35/7.5 and TS 32, Rated cross-section: 2.5 mm², Width: 6 mm, Colour: Beige

Article number	Article name	GTIN (EAN)	Packaging unit
<u>1390.2</u>	TRK 1,5 BG	4044211044312	100



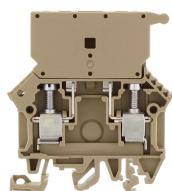
Fused terminal with disconnect plug, Screw connection, Mounting type:Mounting rail TS 35/7.5 and TS 32, Rated cross-section: 10 mm², Width: 8 mm, Colour: Beige

Article number	Article name	GTIN (EAN)	Packaging unit
<u>17044.2</u>	SIK 10/ST/5x20 BG	4044211155827	25 ST



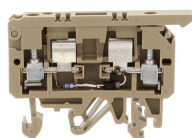
Fused terminal with disconnect plug, Screw connection, Mounting type:Mounting rail TS 35/7.5 and TS 32, Rated cross-section: 10 mm², Width: 10 mm, Colour: Black

Article number	Article name	GTIN (EAN)	Packaging unit
<u>17041.4</u>	SIK 10/Z/ST PA-G BK	4044211155780	25 ST



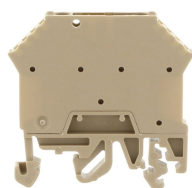
Fused terminal with disconnect plug, Screw connection, Mounting type:Mounting rail TS 35/7.5 and TS 32, Rated cross-section: 10 mm², Width: 8 mm, Colour: Beige

Article number	Article name	GTIN (EAN)	Packaging unit
<u>17044.2</u>	SIK 10/ST/5x20 BG	4044211155827	25 ST



Fuse-disconnect terminal, Screw connection, Mounting type:Mounting rail TS 35/7.5 and TS 32, Rated cross-section: 4 mm², Width: 8 mm, Colour: Beige

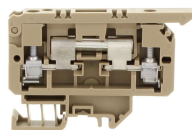
Article number	Article name	GTIN (EAN)	Packaging unit
<u>2450.2</u>	STK 1/LED(RD)/48V DC BG	4044211052409	100 ST



Disconnect terminal, Screw connection, Mounting type:Mounting rail TS 35/7.5 and TS 32, Rated cross-section: 2.5 mm², Width: 6 mm, Colour: Beige

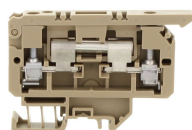
Article number	Article name	GTIN (EAN)	Packaging unit
<u>1398.2</u>	TRK 1,5 BG	4044211044459	100 ST

##INVERSE##CONTA-CONNECT



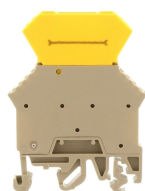
Disconnect terminal, Screw connection, Mounting type: Mounting rail TS 15/5.5, Rated cross-section: 4 mm², Width: 8 mm, Colour: Beige

Article number	Article name	GTIN (EAN)	Packaging unit
<u>2194.2</u>	TK 2/15/K BG	4044211050214	100



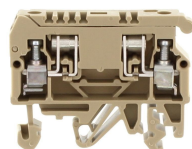
Disconnect terminal, Screw connection, Mounting type: Mounting rail TS 15/5.5, Rated cross-section: 4 mm², Width: 8 mm, Colour: Beige

Article number	Article name	GTIN (EAN)	Packaging unit
<u>2194.2</u>	TK 2/15/K BG	4044211050214	100



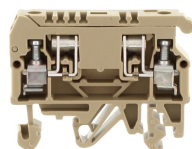
Disconnect terminal, Screw connection, Mounting type: Mounting rail TS 35/7.5 and TS 32, Rated cross-section: 2.5 mm², Width: 6 mm, Colour: Beige

Article number	Article name	GTIN (EAN)	Packaging unit
<u>1394.2</u>	TRK 1,5/DS BG	4044211044411	50 ST



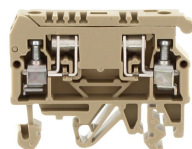
Disconnect terminal, Screw connection, Mounting type: Mounting rail TS 35/7.5 and TS 32, Rated cross-section: 4 mm², Width: 8 mm, Colour: Beige

Article number	Article name	GTIN (EAN)	Packaging unit
<u>1381.2</u>	STK 2/K BG	4044211044213	100



Disconnect terminal, Screw connection, Mounting type: Mounting rail TS 35/7.5 and TS 32, Rated cross-section: 4 mm², Width: 8 mm, Colour: Beige

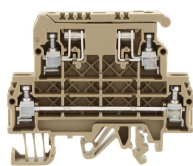
Article number	Article name	GTIN (EAN)	Packaging unit
<u>1381.2</u>	STK 2/K BG	4044211044213	100



Disconnect terminal, Screw connection, Mounting type: Mounting rail TS 35/7.5 and TS 32, Rated cross-section: 4 mm², Width: 8 mm, Colour: Beige

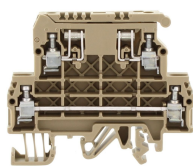
Article number	Article name	GTIN (EAN)	Packaging unit
<u>1381.2</u>	STK 2/K BG	4044211044213	100

##INVERSE##CONTA-CONNECT



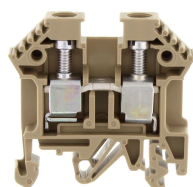
Disconnect terminal, Screw connection, Mounting type: Mounting rail TS 35/7.5 and TS 32, Rated cross-section: 4 mm², Width: 8 mm, Colour: Beige

Article number	Article name	GTIN (EAN)	Packaging unit
<u>1383.2</u>	STKD 1/K BG	4044211044244	50



Disconnect terminal, Screw connection, Mounting type: Mounting rail TS 35/7.5 and TS 32, Rated cross-section: 4 mm², Width: 8 mm, Colour: Beige

Article number	Article name	GTIN (EAN)	Packaging unit
<u>1383.2</u>	STKD 1/K BG	4044211044244	50



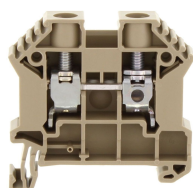
Feed-through terminal, Screw connection, Mounting type: Mounting rail TS 35/7.5 and TS 32, Rated cross-section: 10 mm², Width: 8 mm, Colour: Beige

Article number	Article name	GTIN (EAN)	Packaging unit
<u>1005.2</u>	RK 6-10 BG	4044211001148	100



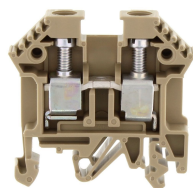
Protective earth terminal, Screw connection, Mounting type: Mounting rail TS 35/7.5, Rated cross-section: 10 mm², Width: 10 mm, Colour: Green-yellow

Article number	Article name	GTIN (EAN)	Packaging unit
<u>1213.2</u>	SL 10/35 GNYE	4044211028800	80 ST



Feed-through terminal, Screw connection, Mounting type: Mounting rail TS 35/7.5, Rated cross-section: 16 mm², Width: 10 mm, Colour: Beige

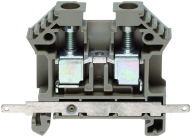
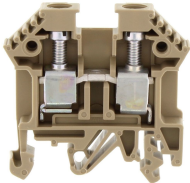
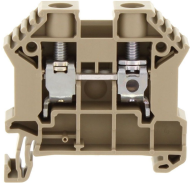
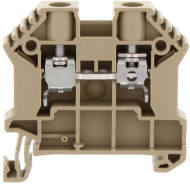
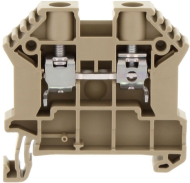
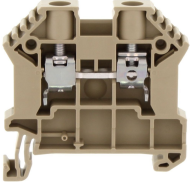
Article number	Article name	GTIN (EAN)	Packaging unit
<u>87807.2</u>	SRK 10/2A Ex BG	4044211199807	100



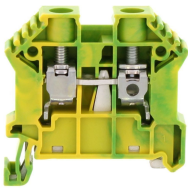
Feed-through terminal, Screw connection, Mounting type: Mounting rail TS 35/7.5 and TS 32, Rated cross-section: 10 mm², Width: 8 mm, Colour: Beige

Article number	Article name	GTIN (EAN)	Packaging unit
<u>1005.2</u>	RK 6-10 BG	4044211001148	100

##INVERSE##CONTA-CONNECT

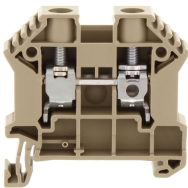
	Feed-through terminal, Screw connection, Mounting type: Mounting rail TS 35/7.5, Rated cross-section: 10 mm², Width: 8 mm, Colour: Beige			
	Article number	Article name	GTIN (EAN)	Packaging unit
	<u>1168.2</u>	RK 6-10/35/SAS BG	4044211128630	100
	Feed-through terminal, Screw connection, Mounting type: Mounting rail TS 35/7.5 and TS 32, Rated cross-section: 10 mm², Width: 8 mm, Colour: Beige			
	Article number	Article name	GTIN (EAN)	Packaging unit
	<u>1005.2</u>	RK 6-10 BG	4044211001148	100
	Feed-through terminal, Screw connection, Mounting type: Mounting rail TS 35/7.5, Rated cross-section: 16 mm², Width: 10 mm, Colour: Beige			
	Article number	Article name	GTIN (EAN)	Packaging unit
	<u>87807.2</u>	SRK 10/2A Ex BG	4044211199807	100
	Feed-through terminal, Screw connection, Mounting type: Mounting rail TS 35/7.5, Rated cross-section: 10 mm², Width: 8 mm, Colour: Beige			
	Article number	Article name	GTIN (EAN)	Packaging unit
	<u>87805.2</u>	SRK 6/2A Ex BG	4044211199777	100
	Feed-through terminal, Screw connection, Mounting type: Mounting rail TS 35/7.5, Rated cross-section: 10 mm², Width: 8 mm, Colour: Beige			
	Article number	Article name	GTIN (EAN)	Packaging unit
	<u>87805.2</u>	SRK 6/2A Ex BG	4044211199777	100
	Feed-through terminal, Screw connection, Mounting type: Mounting rail TS 35/7.5, Rated cross-section: 10 mm², Width: 8 mm, Colour: Beige			
	Article number	Article name	GTIN (EAN)	Packaging unit
	<u>87805.2</u>	SRK 6/2A Ex BG	4044211199777	100

##INVERSE##CONTA-CONNECT



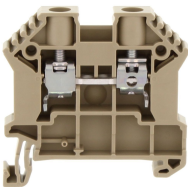
EX-Protective earth terminal, Screw connection, Mounting type: Mounting rail TS 35/7.5, Rated cross-section: 16 mm², Width: 10 mm, Colour: Green-yellow

Article number	Article name	GTIN (EAN)	Packaging unit
<u>87808.2</u>	SSL 10/2A Ex GNYE	4044211199821	100 ST



Feed-through terminal, Screw connection, Mounting type: Mounting rail TS 35/7.5, Rated cross-section: 16 mm², Width: 10 mm, Colour: Beige

Article number	Article name	GTIN (EAN)	Packaging unit
<u>87807.2</u>	SRK 10/2A Ex BG	4044211199807	100



Feed-through terminal, Screw connection, Mounting type: Mounting rail TS 35/7.5, Rated cross-section: 10 mm², Width: 8 mm, Colour: Beige

Article number	Article name	GTIN (EAN)	Packaging unit
<u>87805.2</u>	SRK 6/2A Ex BG	4044211199777	100