

1216.5

NT 2,5-4 | 6x6 BU

NT 2,5-4 | 6x6 BU



M3



ERC



Neutral-disconnect terminal, Screw connection, Mounting type: Mounting rail TS 35/7.5 and TS 32, Rated cross-section: 4 mm<sup>2</sup>, Width: 6 mm, Colour: Blue

## Business data

Product description	Neutral disconnect terminal
Packaging unit	100
Quantity unit	PC
Weight per piece (not including packaging)	13.6
Weight per piece (including packaging)	14.24
Unit of weight	G
Customs number	85369010
Country of origin	DE

**1216.5**

**NT 2,5-4 | 6x6 BU**

**NT 2,5-4 | 6x6 BU**

## Technical Data

---

### Dimensions

---

Length	48 mm
Width	6 mm
Height TS 35/7.5	47 mm
Height TS 32	51.5 mm

### Ratings

---

Rated voltage	400 V
Rated current	32 A
Rated cross-section	4 mm <sup>2</sup>
Rated impulse voltage	4 kV
Overvoltage category	III
Contamination degree	3

1216.5

NT 2,5-4 | 6x6 BU

NT 2,5-4 | 6x6 BU

## Technical Data

---

### Connection data

Connection principle	Screw connection
Connection position	Lateral
Connections	1
Special connection	Sammelschiene 6 x 6 mm
Number of terminals per level	1
Number of levels	1
Wire cross-section single-core (rigid) / stranded, min.	0.2 mm <sup>2</sup>
Wire cross-section single core (rigid)/stranded, max.	6 mm <sup>2</sup>
Wire cross-section stranded, min.	0.2 mm <sup>2</sup>
Wire cross-section stranded, max.	6 mm <sup>2</sup>
Wire cross-section stranded with wire-end ferrules, min.	0.2 mm <sup>2</sup>
Wire cross-section stranded with wire-end ferrules, max.	4 mm <sup>2</sup>
Wire cross-section AWG, min.	22
Wire cross-section AWG, max.	10
Stripping length	12 mm
Screw head	Slotted
Screw threading	M 3
Tightening torque, min.	0.5 Nm
Tightening torque, max.	1 Nm

**1216.5**

**NT 2,5-4 | 6x6 BU**

**NT 2,5-4 | 6x6 BU**

## Technical Data

---

### Materials

---

Insulation housing	Polyamide 6.6
--------------------	---------------

Flammability class UL 94	V-2
--------------------------	-----

Working temperature, min.	-40 °C
---------------------------	--------

Working temperature, max.	105 °C
---------------------------	--------

### Further technical data

---

Mounting type	Mounting rail TS 35/7.5 and TS 32
---------------	-----------------------------------

Gauge plug acc. to EN 60 947-1	A4
--------------------------------	----

End plate required	✓
--------------------	---

Version of lengthwise partition	Sliding
---------------------------------	---------

**1216.5**

**NT 2,5-4 | 6x6 BU**

**NT 2,5-4 | 6x6 BU**

## Approvals

---

### Standards and regulations

---

EAC approval	TR ZU 004/2011
--------------	----------------

EAC approval granted	✓
----------------------	---

### KEMA KEUR approval

---

KEMA KEUR approval	EN 60947-7-1
--------------------	--------------

KEMA KEUR approval granted	✓
----------------------------	---

KEMA rated voltage	400 V
--------------------	-------

KEMA rated current	32 A
--------------------	------

KEMA rated impulse voltage	4 kV
----------------------------	------

KEMA wire cross-section single core (rigid), min.	0.2 mm <sup>2</sup>
---	---------------------

KEMA wire cross-section single-core (rigid), max.	6 mm <sup>2</sup>
---	-------------------

KEMA wire cross-section stranded, min.	0.2 mm <sup>2</sup>
--	---------------------

KEMA wire cross-section stranded, max.	6 mm <sup>2</sup>
--	-------------------

KEMA torque, min.	0.5 Nm
-------------------	--------

KEMA torque, max.	1 Nm
-------------------	------

KEMA torque busbar, min.	0.5 Nm
--------------------------	--------

KEMA torque busbar, max.	1 Nm
--------------------------	------

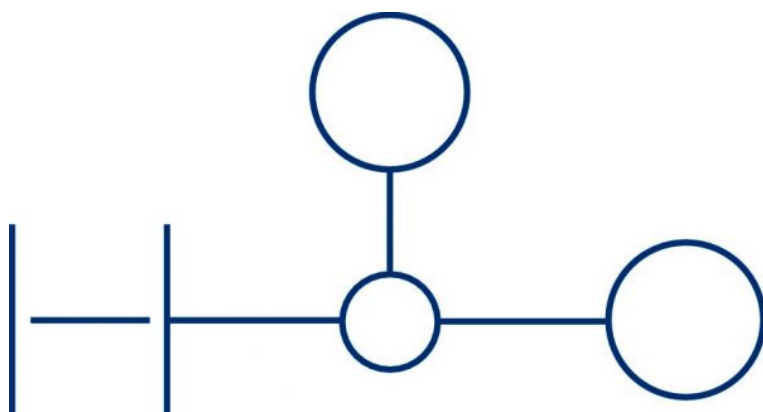
1216.5

NT 2,5-4 | 6x6 BU

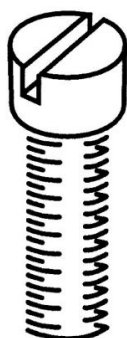
NT 2,5-4 | 6x6 BU

## Media

---



**M3**



**EAC**



1216.5

NT 2,5-4 | 6x6 BU

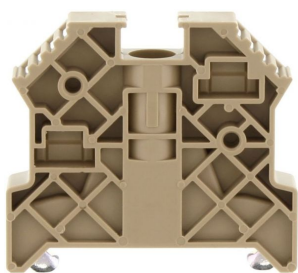
NT 2,5-4 | 6x6 BU

## Accessories

---

### End bracket

---



End stop, Mounting type: Mounting rail TS 35/7.5,  
Width: 9.5 mm, Colour: Beige

### In general

Order number	Article designation	GTIN (EAN)	Packaging unit
2828.0	ES 35/K/ST	4044211055547	50 PC

---

### Support bracket

---

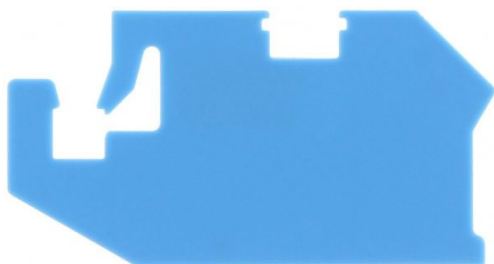


Plate for busbar, Colour: Blue

### In general

Order number	Article designation	GTIN (EAN)	Packaging unit
2577.5	HP 6x6	4044211053710	20 PC

---

1216.5

NT 2,5-4 | 6x6 BU

NT 2,5-4 | 6x6 BU

## Accessories

---

### Test plug

---



Test plug, Colour: Red

### In general

Order number	Article designation	GTIN (EAN)	Packaging unit
2007.0	PS 2,3	4044211048105	20 PC

---

### Busbar

---



Busbar, Material: Copper, Colour: natural

### In general

Order number	Article designation	GTIN (EAN)	Packaging unit
2131.0	Ssch 6x6 CU	4044211049508	1 M

---



1216.5

NT 2,5-4 | 6x6 BU

NT 2,5-4 | 6x6 BU

## Accessories

---

### Busbar

---



Busbar, Material: Brass, Colour: natural

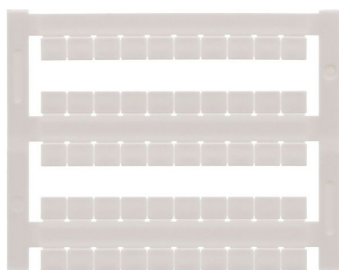
### In general

Order number	Article designation	GTIN (EAN)	Packaging unit
2132.0	Ssch 6x6 MS	4044211049515	1 M

---

### Quick-marking

---



Terminal marker / Pocket Maxicard, Length: 5 mm,  
Width: 6 mm, Colour: White

### In general

Order number	Article designation	GTIN (EAN)	Packaging unit
4702.7	PMC SB 6/50 WH	4044211089986	500 PC

---

1216.5

NT 2,5-4 | 6x6 BU

NT 2,5-4 | 6x6 BU

## Accessories

---

### Screw driver

---



Screwdriver with bare blade, Colour: Black-grey

### In general

Order number	Article designation	GTIN (EAN)	Packaging unit
1086.0	SDB 0,6x3,5	4044211014797	1 PC

---